

baby jogger®

RAPIDLOCK™

INFANT CAR SEAT BASE



©2025 Baby Jogger NWL0000911405D 12/24

KEEP INSTRUCTIONS FOR FUTURE USE

Do not install or use this child restraint base until you read and understand the instructions in this manual.

FAILURE TO PROPERLY USE THIS CHILD RESTRAINT BASE INCREASES THE RISK OF SERIOUS INJURY OR DEATH IN A SUDDEN STOP OR CRASH.

babyjogger.com

TABLE OF CONTENTS

Registration.....	3
Certification.....	4
Warnings.....	5
LATCH System.....	7
Vehicle Installation Safety.....	8
Features.....	11
Adjusting the Recline.....	12
Base Installation	
• LATCH.....	13
• Lap/Shoulder Belt.....	18
Attaching & Removing Car Seat.....	22
LATCH Storage.....	23
Care and Maintenance.....	25
Warranty.....	26
Instruction Storage.....	27

REGISTERING YOUR CHILD RESTRAINT

Please complete the pre-paid registration card that is attached to your child restraint and send the portion shown below in today or register online at www.babyjogger.com/carseatregistration.

Tear off and mail this part. Please print clearly in the spaces below.

Name _____

Mailing Address _____

City _____ State _____ Zip Code _____

Email Address _____

BABY JOGGER® CITY GO™
MODEL NO: _____
SERIAL NO: _____
MANUFACTURED IN (YYYY/MM/DD): _____
DO NOT USE 7 YEARS AFTER THE MANUFACTURE DATE
Baby Jogger, LLC
• Atlanta, GA 30328 1-800-241-1848 • www.babyjogger.com
MADE IN CHINA

Child restraints could be recalled for safety reasons. You must register this restraint to be reached in a recall. Send your name, address, email address if available and the restraint's model number and manufacturing date to:

Baby Jogger, LLC
P.O. Box 169, Elverson, PA 19520-9901
or call 1-800-241-1848
or register online at
www.babyjogger.com/carseatregistration

FOR RECALL INFORMATION

Call the U.S. Government's Vehicle Safety Hotline at 1-888-327-4236 (TTY: 1-800-424-9153), or go to <http://www.NHTSA.gov>.

CERTIFICATION

This child restraint conforms to all applicable Federal Motor Vehicle Safety Standards. This restraint is certified for use in motor vehicles.

This child restraint's base is NOT certified for use in aircraft. Contact the airline for their specific policies.

It is not intended to be used in low-speed vehicles such as golf carts, ATV's or any other non-certified vehicles.

IF YOU NEED ASSISTANCE OR HAVE ANY QUESTIONS

If you have any questions regarding installation of your seat, please contact consumer care:

Baby Jogger, LLC
4110 Premier Drive
High Point, NC 27265
1-800-241-1848
www.babyjogger.com

For information regarding child restraints:
www.NHTSA.gov
www.safekids.org
www.seatcheck.org

WARNING



DO NOT place rear-facing child seat on front seat with an active airbag. DEATH OR SERIOUS INJURY can occur. The back seat is the safest place for children 12 and under.

- Only place this child restraint base in a rear-facing direction on a forward facing vehicle seat when using it in a vehicle. NEVER install this child restraint base on vehicle seats that face the side or rear of the vehicle.
- Never leave child unattended.
- DO NOT attach car seats to this base that are not manufactured by Baby Jogger.
- Children are safer riding rear-facing and should ride rear-facing as long as possible, until they reach the maximum rear-facing height or weight rating for their car seat. Baby Jogger convertible and all-in-one car seats have higher rear-facing limits that will allow children to ride rear-facing longer after outgrowing their infant car seat. Be sure to check your local and state laws, as well as AAP and NHTSA recommendations, for car seat usage.

*Baby Jogger Supports the American Academy of Pediatrics and National Highway Traffic Safety Administration's Car Seat Guidelines.

- Read these instructions carefully before using and before installing this child restraint base in a vehicle.
- Failure to completely follow the instructions provided in this manual as well as the labels on this product can result in DEATH or SERIOUS INJURY.
- Read your vehicle owner's manual for important information concerning child restraint installation.
- DO NOT ALLOW anyone who has not read the instruction manual to install or use this child restraint base.
- Register your child restraint base with the manufacturer.
- According to accident statistics, children are safer when properly restrained in rear seating positions, than in the front seating positions.

- Owners of vehicles with airbags should refer to their vehicle owner's manual for child restraint installation instructions.
- Some children with special needs, such as pre-term babies or those who have tested positive for positional apnea, may be at increased risk of suffering breathing or other difficulties in a child restraint. If your child has special needs, we recommend consulting a physician to determine the proper child restraint for your child before using this product.
- Secure this child restraint base with the vehicle's child restraint anchorage system (LATCH) if available or with a vehicle belt, never both.
- Never leave child restraint base unsecured in your vehicle. An unsecured base can be thrown around and may injure occupants in a sharp turn, sudden stop, or crash.
- To prevent ejection, securely attach the child restraint to the base and lift up to check that it is attached.
- Make sure nothing interferes with the carrier attachment to the base.
- ALWAYS store the LATCH connectors when they are not being used for installation.
- NEVER place two LATCH connectors on one vehicle LATCH anchor.
- DO NOT allow children to play with or around this child restraint.
- Always replace the base after a crash of any kind even if it was unoccupied. A crash can cause unseen damage to the child restraint base that may not be visible.
- Do not modify your child restraint base or use any accessories or parts not supplied by the manufacturer.
- NEVER use a second-hand child restraint base that you do not know its history.
- DISCONTINUE USE of this child restraint base after 7 years from the manufacture date. The manufacture date can be found on the top side of your child restraint base.
- Never use child restraint base if it has been damaged or broken or any component is missing. Do not use a cut, frayed or damaged child restraint harness, vehicle seat belt or LATCH belt.

LATCH SYSTEM



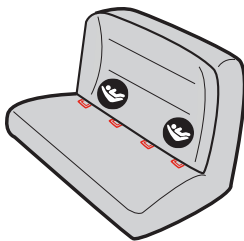
LATCH stands for Lower Anchors and Tethers for Children.

The LATCH system can make installation easier without using the vehicle's seat belts. LATCH is a way to secure your child restraint to your vehicle by using the LATCH connectors on your child restraint base. These connectors attach to the lower points in certain vehicle seating positions. Refer to your vehicle owner's manual for LATCH locations.

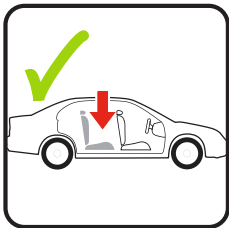
The base is designed to be used at the standard spacing of 11" (28 cm) from the center of one anchor point to the center of another anchor point. Please refer to your vehicle owner's manual for information about using LATCH in certain seating positions.

LATCH may be used for spacing larger than 11" (28 cm) ONLY if your vehicle manufacturer allows it.

If your vehicle does not have lower anchor points, you can still install your child restraint with the vehicle's belt system.



VEHICLE SEAT LOCATIONS



⚠ WARNING!

- Failure to place the child restraint base in the correct seating positions increases the risk of serious injury or death.
- DO NOT place rear-facing child restraint base on front seat with airbag. DEATH or SERIOUS INJURY can occur.
- The back seat is the safest place for children 12 and under. Owners of vehicles with airbags should refer to their owner's manual for child restraint installation instructions.
- The VEHICLE seat must face forward.
- NEVER place the child restraint base on any vehicle seat that does not lock. Folding seats can fall forward and could cause serious injury to your child in a vehicle crash.

UNSAFE VEHICLE SEAT BELTS

⚠ WARNING! The following types of vehicle seat belts are NOT compatible with this base. If any of the belt types listed are in the chosen seating position, choose another seating position within in the vehicle.



Motorized Shoulder
Belt with Lap Belt



Lap or Shoulder
Belt Mounted on
Vehicle Door

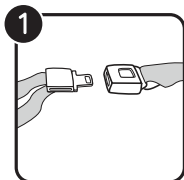


Non-Locking Lap
Belts with Emergency
Locking Retractor
(ELR)



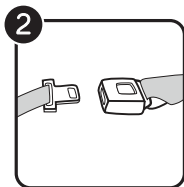
Lap/Shoulder Belts
with 2 Retractors
(including inflatable
seatbelts)

SAFE VEHICLE SEAT BELTS

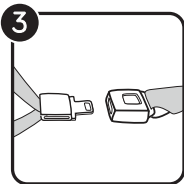


The following vehicle belt systems are SAFE to use for base installation.

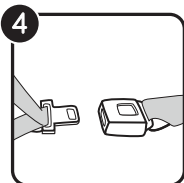
1 Lap belt with locking latch plate - The vehicle belt is tightened by pulling on the free end of the strap until the belt is tight.



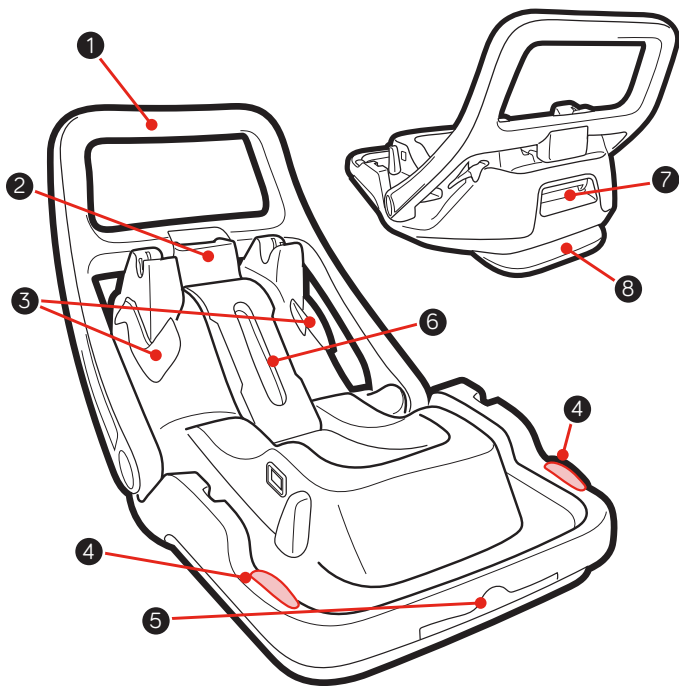
2 Lap belt with automatic locking retractor (ALR)- The automatic locking retractor does not allow the lap belt to get longer once it is buckled. The vehicle belt is tightened by feeding the seat belt webbing into the retractor.



3 Lap/Shoulder belt with locking latch plate - The lap portion of this belt does not loosen once the belt is buckled. The vehicle belt is tightened by pulling up hard on shoulder belt and feeding the webbing into the retractor.



4 Lap/Shoulder belt with sliding latch plate - The latch plate slides freely along the lap/shoulder belt. Vehicle belts with sliding latch plates are typically locked at the retractor by pulling all of the webbing out slowly to switch the retractor. The vehicle belt is tightened after switching the retractor by pulling up hard on shoulder belt and feeding the webbing into the retractor.



1 Anti-Rebound Bar

2 RapidLock™ Lock-Off Release
Lever

3 Belt Guides

4 Level Indicators

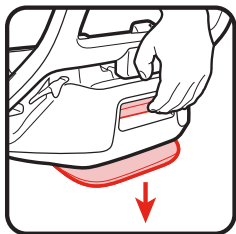
5 Instruction Manual Storage

6 RapidLock™ Lock-Off

7 Base Recline Lever

8 Base Recline Foot

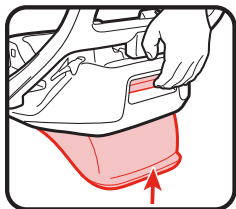
ADJUSTING THE RECLINE



The base has 4 recline positions.

Squeeze on the base recline lever and lift the base to extend the foot.

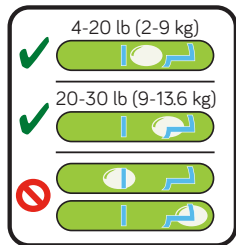
Squeeze on the base recline lever and lower the base to retract the foot.



Check the level indicator for appropriate install.

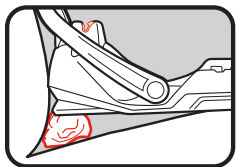
- If the indicator bubble is in the clear area, the restraint is level for infants weighing 4-20 lb (2-9 kg).

- If indicator bubble is partially in the notched area, the restraint is level for a child weighing 20-30 lb (9-13.6 kg).

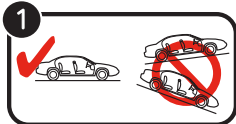


- If the bubble appears outside the blue lines, the child restraint is NOT level. You must adjust your recline position.

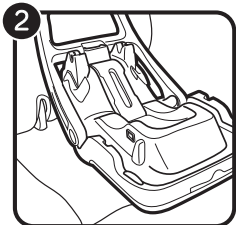
If the level indicator bubble is still not within the appropriate area for your infant's weight when the foot is completely extended, then raise the foot and place a rolled towel under the foot until the bubble is within the appropriate area.



BASE INSTALLATION - LATCH

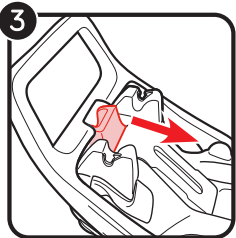


1 Before installing base, make sure vehicle is on level ground.

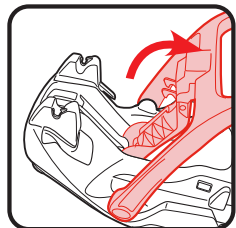


2 Place the base flat on the vehicle seat. Push it back until the front of the base touches the vehicle seat back. Center the base between the lower LATCH anchors.

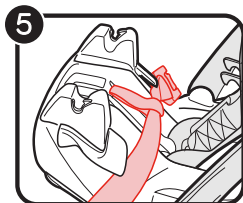
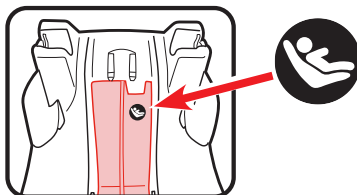
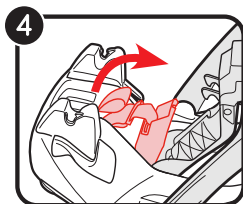
If allowed by your vehicle owner's manual, the center seating position may be used if the anchor spacing is 11" (28 cm) or greater.



3 Pull the RAPIDLOCK™ release lever and raise the lock-off to expose the LATCH storage door.

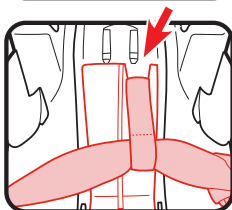


BASE INSTALLATION - LATCH

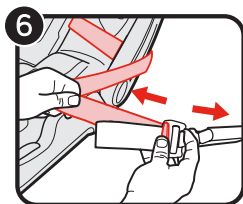


4 Swing open the LATCH storage door, and pull out the LATCH connectors.

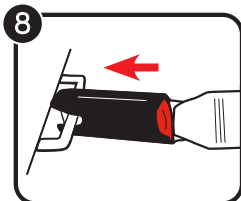
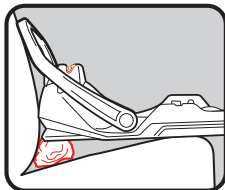
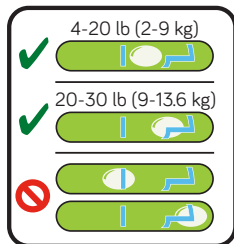
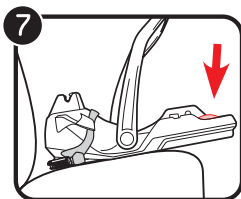
5 Close the storage door and lay the LATCH strap across the base. Make sure the LATCH strap goes through the notch on top and the strap lays on top of the LATCH storage door.



6 Extend the LATCH strap to its maximum length by pressing the gray button and pulling on the strap.



BASE INSTALLATION - LATCH

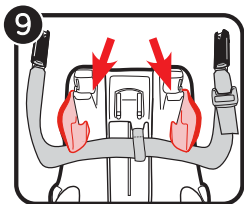


7 Check the level indicator on the base. The bubble must be completely within the area of your child's weight. For infants weighing 4-20 lb (2-9 kg) the bubble must rest within the clear area. For children weighing 20-30 lb (9-13.6 kg) the bubble must rest within the notched area. To recline, review page 21.

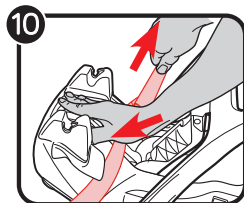
Note: If the foot is in the most raised position and the bubble is out of the area of your child's weight you can place a tightly rolled towel or pool noodle under the front end of the base to achieve the proper recline.

8 Connect LATCH Hooks to Vehicle's Lower LATCH Anchors. LATCH strap should lay as flat as possible and not be twisted.

BASE INSTALLATION - LATCH

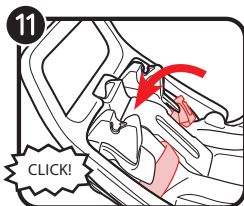


9 Make sure LATCH strap goes under the belt guides.



10 Press down firmly on the top of the base while pulling on the free end of the LATCH strap to remove all of the slack.

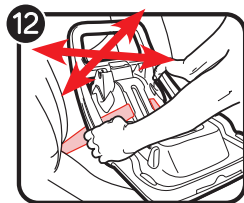
Do not pull on the strap with excessive force.



11 Shut the RAPIDLOCK™ lock-off on top of the LATCH strap. You may also shut the lock-off on top of the loose end of the LATCH strap as well.

Close the lock-off until you hear a "CLICK".

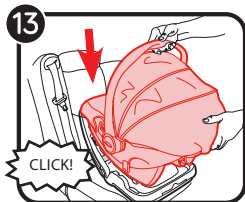
⚠ WARNING: Keep hands away from the lock-off area when closing the lock-off.



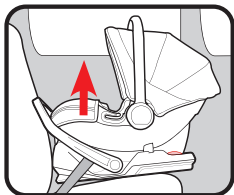
12 Test for tightness. Grab the sides of the base where the LATCH strap is and push and pull the base from side to side and front to back.

If the base moves less than 1" (2.5 cm), it is tight enough.

BASE INSTALLATION - LATCH

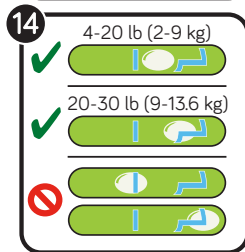


- 13 Place car seat into the base. Push down on the front of the car seat and handle until you hear a “CLICK”. Test to make sure the car seat is attached by pulling up on the front corners of car seat.

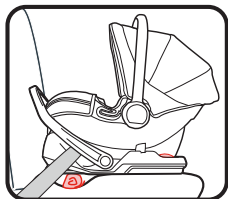


- 14 Check the level indicator on the base. The bubble must be completely within the area of your child's weight.

Check the level indicator with child in the child restraint.

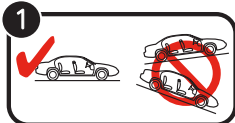


For infants weighing 4-20 lb (2-9 kg) the bubble must rest within the clear area. For children weighing 20-30 lb (9-13.6 kg) the bubble must rest within the notched area. To recline, review page 21.

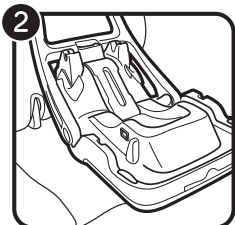


Note: If the foot is in the most raised position and the bubble is out of the area of your child's weight you can place a tightly rolled towel or pool noodle under the front end of the base to achieve the proper recline.

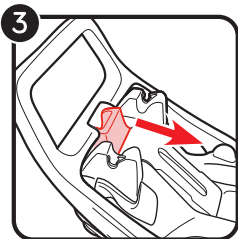
BASE INSTALLATION - LAP/SHOULDER BELT



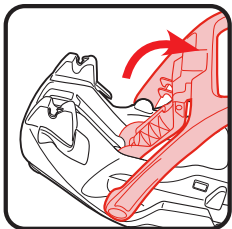
1 Before installing base, make sure vehicle is on level ground.



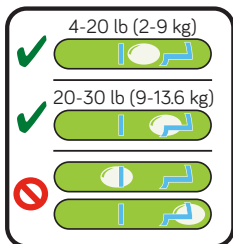
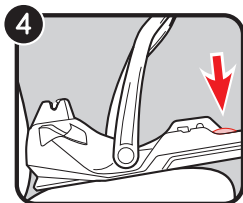
2 Place the base flat on the vehicle seat. Push it back until the front of the base touches the vehicle seat back.



3 Pull the RAPIDLOCK™ release lever to open the lock-off.

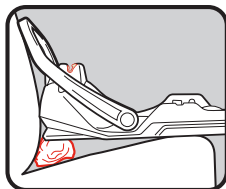


BASE INSTALLATION - LAP/SHOULDER BELT



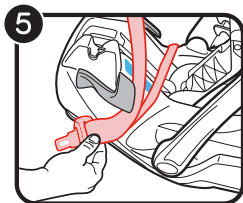
- 4 Check the level indicator on the base. The bubble must be completely within the area of your child's weight. For infants weighing 4-20 lb (2-9 kg) the bubble must rest within the clear area. For children weighing 20-30 lb (9-13.6 kg) the bubble must rest within the notched area. To recline, review page 21.

Note: If the foot is in the most raised position and the bubble is out of the area of your child's weight you can place a tightly rolled towel or pool noodle under the front end of the base to achieve the proper recline.

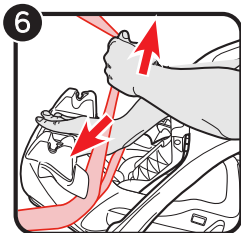


- 5 Thread the lap portion of the vehicle seat belt through the blue rear-facing belt path (also marked with a blue label) and buckle it. The seat belt should lay as flat as possible and not be twisted.

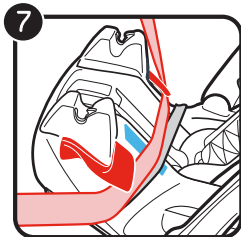
Review your vehicle's owner's manual for vehicle seat belt use.



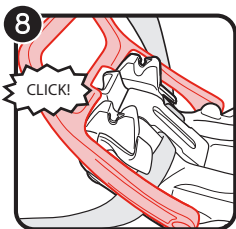
BASE INSTALLATION - LAP/SHOULDER BELT



- 6 Press down firmly on the top of the base while pulling on the shoulder belt to remove all the slack. Do not pull on the strap with excessive force.



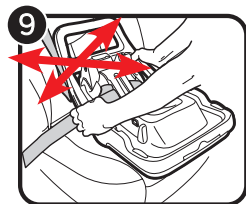
- 7 Thread the shoulder portion of the vehicle seat belt through the blue rear-facing belt path (also marked with a blue label) and under the belt guides. The seat belt should lay as flat as possible and not be twisted. Make sure both lap and shoulder belt goes under the belt guides.



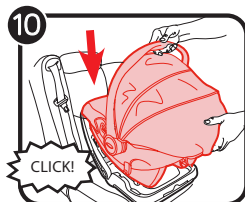
- 8 Shut the RAPIDLOCK™ lock-off on top of the seat belt strap. Close the lock-off until you hear a "CLICK".

⚠ WARNING: Keep hands away from the lock-off area when closing the lock-off.

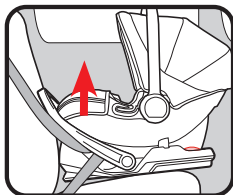
BASE INSTALLATION - LAP/SHOULDER BELT



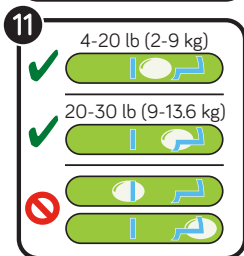
- 9 Test for tightness. Grab the sides of the base where the seat belt is and push and pull the base from side to side and front to back.
If the base moves less than 1" (2.5 cm), it is tight enough.



- 10 Place car seat into the base. Push down on the front of the car seat and handle until you hear a "CLICK".
Test to make sure the car seat is attached by pulling up on the front corners of car seat.

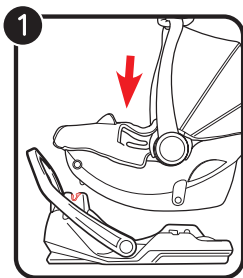


- 11 Check the level indicator on the base. The bubble must be completely within the area of your child's weight.
Check the level indicator with child in the child restraint.
For infants weighing 4-20 lb (2-9 kg) the bubble must rest within the clear area. For children weighing 20-30 lb (9-13.6 kg) the bubble must rest within the notched area. To recline, review page 21.



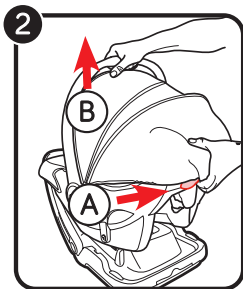
Note: If the foot is in the most raised position and the bubble is out of the area of your child's weight you can place a tightly rolled towel or pool noodle under the front end of the base to achieve the proper recline.

ATTACHING & REMOVING THE CAR SEAT

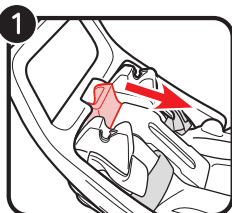


1 Attach the carrier into the base until you hear a **CLICK**. Lift up on the handle of the carrier to make sure that it is securely attached in the base.

2 To remove the seat from the base, pull up the release handle located on the rear of the car seat (A). Lift carrier up (B).



LATCH STORAGE

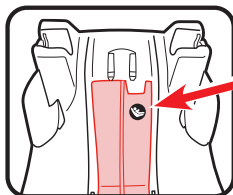
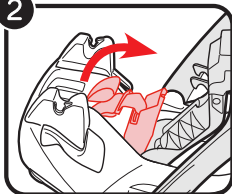


- 1 Pull the RAPIDLOCK™ release lever and raise the lock-off to expose the LATCH storage door.



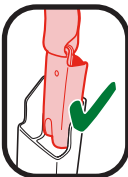
LATCH STORAGE

2

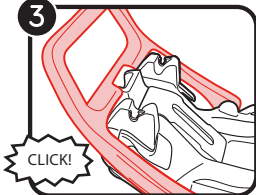


2 Swing open the LATCH storage door, and insert the LATCH connectors into the storage slots. Tuck the LATCH straps into the storage compartment and close the storage door.

Make sure the LATCH connectors are stored facing the correct direction.



3



3 Close the RAPIDLOCK™ lock-off until you hear a "CLICK".

CARE AND MAINTENANCE

Cleaning the Base:

Spot clean using warm water and mild soap. Do not use any other cleaning agents or bleach.

BABY JOGGER LIMITED WARRANTY

This product is warranted against defective materials or workmanship for one year from the date of original purchase. Proof of purchase is required.

The warranty does not include:

- Normal wear and tear
- Corrosion or rust
- Incorrect assembly or the installation of third party parts or accessories not compatible with the original design.
- Accidental or intentional damage, abuse, or neglect.
- Commercial Use
- Improper storage/care of the unit

This warranty specifically excludes claims for indirect, incidental, or consequential damages. The implied warranties of merchantability and fitness for a particular purpose is according to the specific warranty period for this model unit at time of purchase.

Some states do not allow the exclusion or limitation of incidental or consequential damages, so the above limitations or exclusions may not apply to you. This warranty gives you specific legal rights and you may also have other rights which vary from state to state. To know what your legal rights are in your state, consult your local or state consumer affairs office or your state's Attorney General.

Note: When contacting Baby Jogger regarding your product, please have the serial number and manufacturing date ready. It can be found on the underside of the car seat and inside of the base.

Consumer Care Contact Information:

Email: customerservice@babyjogger.com

Call: 1-800-241-1848

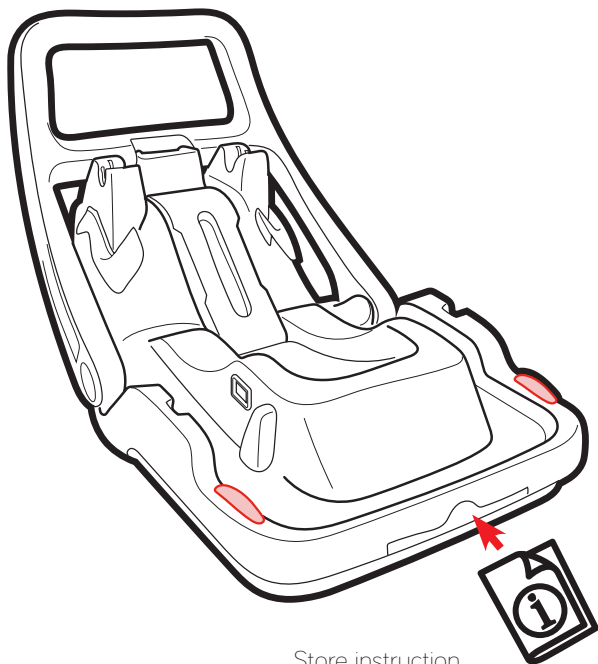
between 8:30am–5:30pm EST.Mon-Fri

Mail: Baby Jogger, LLC

4110 Premier Drive

High Point, NC 27265

INSTRUCTION STORAGE



Store instruction manual in the slot on the rear of the base where the instruction book icon is shown.



newell
BRANDS

Baby Jogger, LLC

5 Concourse Parkway, 8th Floor, Atlanta, GA 30328
1.800.241.1848 • www.babyjogger.com