

First Alert[™]



bark
genie[™]

automatic bark deterrent



INSTRUCTION MANUAL

FABCU1 SERIES

© 2014 Sunbeam Products, Inc. doing business as Jarden Consumer Solutions. All rights reserved. Distributed by Sunbeam Products, Inc. doing business as Jarden Consumer Solutions, Boca Raton, Florida 33431.

First Alert[™] is a trademark of the First Alert Trust, used under license.

Printed in China

GCDS-FA33934-JC

PN 165860-001

IMPORTANT SAFEGUARDS

CAUTION: This ultrasonic noise device should NOT be used less than 12 inches from a human ear.

- This device should only be used to deter unwanted barking of dogs.
- This device is not a toy. Keep out of reach of children.
- This device is not intended to provide protection against aggressive dogs.

SAVE THESE INSTRUCTIONS

About this product:

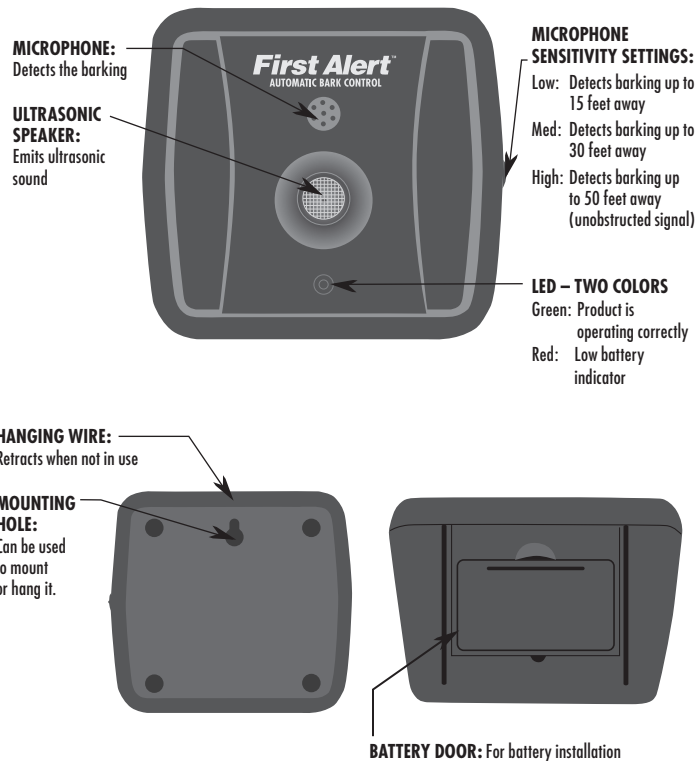
The First Alert™ Bark Genie™ uses ultrasonic sound technology that can only be heard by dogs.

- This product can be taken with you wherever you go.
- This product uses ultrasonic sound to deter unwanted barking of dogs.
- This product can be used as a training aid.
- This product can detect a barking dog from up to 50 feet away.
- This product has 3 levels of bark detection range.
- This product's LED will illuminate red to indicate low battery.

NOTE: This product may not be as effective on dogs who are hearing impaired or deaf.

**DO NOT USE THIS ULTRASONIC BARK CONTROL DEVICE
UNTIL YOU HAVE READ THESE INSTRUCTIONS**

Product Overview:



How it works:

A barking dog triggers the First Alert™ Bark Genie™ to respond by sending an ultrasonic sound that deters the barking behavior and is not heard by humans.



A microphone detects the barking dog then sends a signal to the ultrasonic speaker to begin emitting a high frequency noise.



The ultrasonic sound is emitted provided the dog is barking; once the dog stops barking the First Alert™ Bark Genie™ also will stop emitting the ultrasonic sound.

NOTE: Maximum operating range is 50 feet unobstructed when on HIGH microphone setting

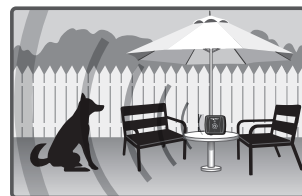
USAGE APPLICATIONS



Mount to a wall using the mounting hole on the back of the unit



Sit on a table or counter



Sit on a patio table



Take it with you

NOTE: Some dogs may not be distracted by the ultrasonic sound at all. If that is the case, these dogs may require use of more advanced deterrents and/or training techniques.

Operating Instructions:

BATTERY INSTALLATION

The First Alert™ Bark Genie™ operates using a 9V alkaline battery (not included). Always use a new battery. Do not use rechargeable batteries.

- 1 Remove battery door by pressing the lever and pulling the door from the slots
- 2 Insert battery according to the positive and negative terminal markings into the battery snap connector
- 3 Replace battery door by inserting into the slots and pressing close



NOTE: Setting the adjustment dial to the OFF position when the product is not needed will extend the battery life.

TESTING

- 1 Turn the adjustment dial to TEST
- 2 Hold the unit at an arm's length away from you
- 3 Speak the word "bark" loudly



NOTE: If the LED flashes **GREEN** and a beep sound is heard then the product is functioning normally.

If a beep is **NOT** heard then repeat Step 3 with a louder voice.

If the LED illuminates **RED** then the battery is low.

If the LED still does not flash check that the battery is installed correctly and the door is securely closed.

Ready to Use

- 1 Determine where you are going to use the First Alert™ Bark Genie™.

NOTE: optimal performance will be achieved when there are NO OBSTRUCTIONS between the First Alert™ Bark Genie™ and the area where the dog will be barking.

We recommend that the First Alert™ Bark Genie™ be placed at least 5 feet from the ground to minimize possible obstruction of the ultrasonic sound.

- 2 Set microphone setting using the adjustment dial.
Low: This setting can detect barks from 15 feet away.
(We recommend this setting for many indoor applications)
Med: This setting can detect barks from 30 feet away.
High: This setting can detect barks from 50 feet away.

LED

- The LED will illuminate **GREEN** when the unit is functioning normally.
- The LED will illuminate **RED** when the battery is low.
- The LED will **NOT** illuminate if the battery is too low. If this condition is identified use the **TEST** mode and follow the instructions described in this section for trouble shooting.

HINTS & TIPS

Optimal performance will be achieved when obstructions between the device and the dog are minimized.

Place the device at least 5 feet from the ground pointed in the direction of where the dog barking originates.

To reduce dogs becoming desensitized to the ultrasonic sound it is recommended that it be turned OFF when it is not needed to deter barking. This practice will also extend the life of the battery.

OPERATING NOTES

- Each dog can have a different reaction to the correction. These reactions can vary from a dip of the head, to shaking the head, whining, excessive barking, confusion, or running away.

CARE AND MAINTENANCE

- Always remove the battery before attempting to clean.
- Use a clean damp cloth, water only.
- Never use any household or industrial cleaners.
- Do not submerge the unit in water or any other liquid.

FCC Statement

Potential for Radio/Television Interference

This product has been tested and found to comply with the limits for a Class B digital device, pursuant to part 15 of the FCC rules.

These limits are designed to provide reasonable protection against harmful interference in a residential installation. The product generates, uses, and can radiate radio frequency energy and, if not installed and used in accordance with the instructions, may cause harmful interference to radio communications. However, there is no guarantee that the interference will not occur in a particular installation. If the product does cause harmful interference with radio or television reception, which can be determined by turning the product on or off, the user is encouraged to try to correct the interference by one or more of the following measures:

- Reorient or relocate the receiving antenna.
- Increase the separation between the product and the receiver.
- Connect the product into an outlet on a circuit different from that to which the receiver is connected.
- Consult the dealer or an experienced radio/TV technician for help.

Changes or modifications not expressly approved by the party responsible for compliance could void the user's authority to operate the equipment.

1 Year Warranty

In the U.S.A. and Canada

If you have any questions regarding this warranty or would like to obtain warranty service, please call 1-888-474-3172 and a convenient service center address will be provided to you.

Sunbeam Products, Inc. doing business as Jarden Consumer Solutions, or if in Canada, Sunbeam Corporation (Canada) Limited doing business as Jarden Consumer Solutions (collectively "JCS") warrants that for a period of one year from the date of purchase, this product will be free from defects in material and workmanship. JCS, at its option, will repair or replace this product or any component of the product found to be defective during the warranty period. Replacement will be made with a new or remanufactured product or component. If the product is no longer available, replacement may be made with a similar product of equal or greater value. This is your exclusive warranty.

DO NOT attempt to repair or adjust any electrical or mechanical functions on this product. Doing so will void this warranty.

This warranty is valid for the original retail purchaser from the date of initial retail purchase and is not transferable. Keep the original sales receipt. Proof of purchase is required to obtain warranty performance. JCS dealers, service centers, or retail stores selling JCS products do not have the right to alter, modify or any way change the terms and conditions of this warranty. This warranty does not cover normal wear of parts or damage resulting from any of the following: negligent use or misuse of the product, use on improper voltage or current, use contrary to the operating instructions, disassembly, repair or alteration by anyone other than JCS or an authorized Sunbeam service center.

Further, the warranty does not cover: Acts of God, such as fire, flood, hurricanes and tornadoes.

What are the limits on Sunbeam's Liability?

JCS shall not be liable for any incidental or consequential damages caused by the breach of any express, implied or statutory warranty or condition. Except to the extent prohibited by applicable law, any implied warranty or condition of merchantability or fitness for a particular purpose is limited in duration to the duration of the above warranty. JCS disclaims all other warranties, conditions or representations, express, implied, statutory or otherwise. JCS shall not be liable for any damages of any kind resulting from the purchase, use or misuse of, or inability to use the product including incidental, special, consequential or similar damages or loss of profits, or for any breach of contract, fundamental or otherwise, or for any claim brought against purchaser by any other party.

Some provinces, states or jurisdictions do not allow the exclusion or limitation of incidental or consequential damages or limitations on how long an implied warranty lasts, so the above limitations or exclusion may not apply to you. This warranty gives you specific legal rights, and you may also have other rights that vary from province to province, state to state or jurisdiction to jurisdiction.

In the U.S.A., this warranty is offered by Sunbeam Products, Inc. doing business as Jarden Consumer Solutions located in Boca Raton, Florida 33431.

In Canada, this warranty is offered by Sunbeam Corporation (Canada) Limited, doing business as Jarden Consumer Solutions located at 20 B Hereford Street, Brampton, Ontario L6Y 0M1.

PLEASE DO NOT RETURN THIS PRODUCT TO ANY OF THESE ADDRESSES OR TO THE PLACE OF PURCHASE.