

contigo®

CARE AND USE INSTRUCTIONS

ASHLAND™

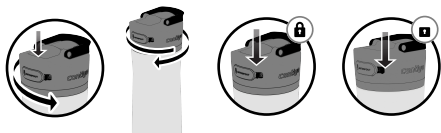


⚠ CAUTION:

- Product is NOT designed for hot liquids. Use only with cold liquids. DO NOT use with carbonated or pulpy beverages.
- Prior to drinking, make sure the AUTOSPOUT® lid is properly threaded to the body and screwed completely.
- Avoid accidental depressing of the AUTOSPOUT® button by keeping the button free and clear of other objects.
- DO NOT overfill. Fill liquid to the capacity line on the outside of the bottle or just below the threading on the bottle.
- DO NOT microwave or freeze.
- DO NOT use cleaners containing bleach, chlorine, abrasives, and/or harsh chemicals.
- When using the water bottle at high altitudes, such as during an airplane flight or when the bottle is exposed to prolonged hot temperatures, such as in an enclosed car, twist the lid a quarter turn to relieve pressure, then reseal the lid before use.
- DO NOT continue to use product if damaged.

USAGE RECOMMENDATIONS

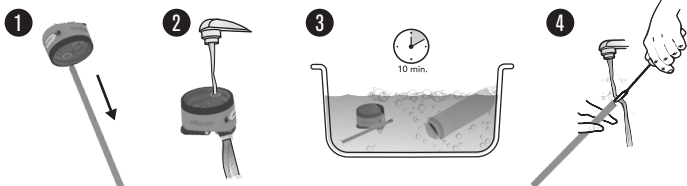
- Use the bottle's lock feature to avoid unintended depressing of the AUTOSPOUT® button.
- The bottle is leak proof only when the spout is in the closed position.



- Twist lid to the right to secure in place.
- Silicone drink spout is NOT removable.
- Do not pull or rotate the spout shield as it may cause damage to the lid.

CLEANING INSTRUCTIONS

- Wash thoroughly before first use.
- Lid and body are top-rack dishwasher safe. Straw should be placed in the silverware basket.
- Wash all lid pieces thoroughly, either in the top-rack of a dishwasher or by hand.
- To disassemble the lid for hand washing:
 1. Remove straw from lid by pulling downward.
 2. Rinse lid immediately after each use with warm water and the spout in the open position.
 3. Soak all pieces in warm soapy water for 10 minutes.
 4. Hand wash, using a Contigo® brush to clean the insides of the straw pieces.
- Let all components dry completely before reassembly.
- To reassemble the lid once cleaned and dry:
 - a. Once all components are dry and ready to use, make sure spout is in the closed position before inserting the straw into the lid.
 - b. ALWAYS STORE WITH LID REMOVED to allow parts to dry completely.



www.GoContigo.com

©2021 Contigo Brands. All Rights Reserved.

Should you have any questions about your purchase, please contact us at 1-888-262-0622 or GoContigo.com