

baby jogger®

city GO™ 2

INFANT CAR SEAT

WITH
RAPIDLOCK™
INFANT CAR SEAT BASE



©2025 Baby Jogger NWL0000911403F 12/24

KEEP INSTRUCTIONS FOR FUTURE USE

Do not install or use this child restraint until you read and understand the instructions in this manual.

FAILURE TO PROPERLY USE THIS CHILD RESTRAINT INCREASES THE RISK OF SERIOUS INJURY OR DEATH IN A SUDDEN STOP OR CRASH.

babyjogger.com

TABLE OF CONTENTS

Registration.....	3
Certification.....	4
Warnings.....	5
LATCH System.....	9
Vehicle Installation Safety.....	10
Features	
• Shell Features.....	14
• Base Features.....	16
Adjusting the Handle.....	17
Attaching the Canopy.....	18
Accessories.....	19
Attaching & Removing Car Seat.....	20
Adjusting the Recline.....	21
Base Installation	
• LATCH.....	22
• Lap/Shoulder Belt.....	27
Install Without Base.....	31
Placing Child in the Carrier.....	34
Adjusting the Buckle.....	37
Securing the Child in the Restraint.....	38
LATCH Storage.....	40
Remove Head Support, Seat Pad & Canopy.....	42
Care and Maintenance.....	45
Warranty.....	46
Instruction Storage.....	47

REGISTERING YOUR CHILD RESTRAINT

Please complete the pre-paid registration card that is attached to your child restraint and send the portion shown below in today or register online at www.babyjogger.com/carseatregistration.

Tear off and mail this part. Please print clearly in the spaces below.

Name _____

Mailing Address _____

City _____ State _____ Zip Code _____

Email Address _____

BABY JOGGER® CITY GO™

MODEL NO.: _____

SERIAL NO.: _____

MANUFACTURED IN (YYYY/MM/DD): _____

DO NOT USE 7 YEARS AFTER THE MANUFACTURE DATE

Baby Jogger, LLC

• Atlanta, GA 30328 1-800-241-1848 • www.babyjogger.com

MADE IN CHINA

Child restraints could be recalled for safety reasons. You must register this restraint to be reached in a recall. Send your name, address, email address if available and the restraint's model number and manufacturing date to:

Baby Jogger, LLC
P.O. Box 169, Elverson, PA 19520-9901
or call 1-800-241-1848
or register online at
www.babyjogger.com/carseatregistration

FOR RECALL INFORMATION

Call the U.S. Government's Vehicle Safety Hotline at 1-888-327-4236 (TTY: 1-800-424-9153), or go to <http://www.NHTSA.gov>.

CERTIFICATION

This child restraint conforms to all applicable Federal Motor Vehicle Safety Standards. This restraint is certified for use in motor vehicles and aircraft. Use only in forward facing aircraft seats. Follow the instruction in the "Install Without Base" section. It is not intended to be used in low-speed vehicles such as golf carts, ATVs or any other non-certified vehicles.

IF YOU NEED ASSISTANCE OR HAVE ANY QUESTIONS

If you have any questions regarding installation of your seat, please contact consumer care:

Baby Jogger, LLC
4110 Premier Drive
High Point, NC 27265
1-800-241-1848
www.babyjogger.com

For information regarding child restraints:
www.NHTSA.gov
www.safekids.org
www.seatcheck.org

WARNING



WHEN USED IN YOUR VEHICLE

DO NOT place rear-facing child seat on front seat with an active airbag. **DEATH OR SERIOUS INJURY** can occur. The back seat is the safest place for children 12 and under.

- Only place this child restraint in a rear-facing direction on a forward facing vehicle seat when using it in a vehicle. **NEVER** install this child restraint on vehicle seats that face the side or rear of the vehicle.
- Never leave child unattended.
- Children are safer riding rear-facing and should ride rear-facing as long as possible, until they reach the maximum rear-facing height or weight rating for their car seat. Baby Jogger convertible and all-in-one car seats have higher rear-facing limits that will allow children to ride rear-facing longer after outgrowing their infant car seat. Be sure to check your local and state laws, as well as AAP and NHTSA recommendations, for car seat usage.

*Baby Jogger Supports the American Academy of Pediatrics and National Highway Traffic Safety Administration's Car Seat Guidelines.

- Read these instructions carefully before using and before installing this seat in a vehicle.
- Failure to completely follow the instructions provided in this manual as well as the labels on this product can result in **DEATH** or **SERIOUS INJURY**.
- Read your vehicle owner's manual for important information concerning child restraint installation.
- **DO NOT ALLOW** anyone who has not read the instruction manual to install or use this child restraint.
- Register your child restraint with the manufacturer.

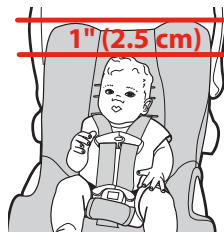
- According to accident statistics, children are safer when properly restrained in rear seating positions, than in the front seating positions.
- Owners of vehicles with airbags should refer to their vehicle owner's manual for child restraint installation instructions.
- For low birth-weight infants, you must always use the body support. The body support must be used for infants who weigh less than 6 lb (2.7 kg). Only use the body support when the harness is used in the bottom 2 sets of harness slots.
- Some children with special needs, such as pre-term babies or those who have tested positive for positional apnea, may be at increased risk of suffering breathing or other difficulties in a child restraint. If your child has special needs, we recommend consulting a physician to determine the proper child restraint for your child before using this product.
- Snugly adjust the belts provided with this child restraint around your child.
- Secure this child restraint with the vehicle's child restraint anchorage system (LATCH) if available or with a vehicle belt, never both.
- Never leave an infant restraint and base unsecured in your vehicle. An unsecured infant restraint or base can be thrown around and may injure occupants in a sharp turn, sudden stop, or crash.
- To prevent ejection, securely attach the child restraint to the base and lift up to check that it is attached.
- Make sure nothing interferes with the carrier attachment to the base.
- ALWAYS store the LATCH connectors when they are not being used for installation.
- NEVER place two LATCH connectors on one vehicle LATCH anchor.
- If installing carrier without base in vehicle, check the red level line on the side of the child restraint to make sure that it is level with the ground.

- DO NOT allow children to play with or around this child restraint.
- Always replace the child restraint and base after a crash of any kind even if it was unoccupied. A crash can cause unseen damage to the child restraint that may not be visible.
- Do not modify your child restraint or base or use any accessories or parts not supplied by the manufacturer of your child restraint.
- The child restraint may become very hot if left in the sun or hot areas. Always make sure to check the temperature of any metal or plastic parts before placing your child in the child restraint.
- NEVER use a second-hand child restraint or base that you do not know its history.
- DISCONTINUE USE of this child restraint after 7 years from the manufacture date. The manufacture date can be found on the underside of your child restraint.
- DO NOT use this child restraint unless your child meets the following height and weight criteria.

Weight: 4-30 lb (1.8 - 13.6 kg)

Height: 32 in (81 cm) or less in height

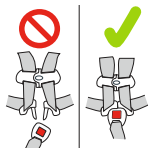
Child's head **MUST** be 1" (2.5 cm) or more below the top of the seat as shown here.



WARNING

FOR USE AS AN INFANT CARRIER

- Read all instructions before use of the infant carrier.
- Keep instructions for future use.
- NEVER LEAVE child unattended.
- **SUFFOCATION HAZARD:** Infant carrier can roll over on soft surfaces and suffocate child. NEVER place carrier on beds, sofas or other soft surfaces.



- **STRANGULATION HAZARD:** Children have **STRANGLED** in loose or partially buckled harness straps. Fully restrain the child even when carrier is used outside the vehicle.
- **FALL HAZARD:** Child's activity can move carrier. **NEVER** place carrier on counter tops, tables or other elevated surfaces.
- **Fall Hazard:** The carrier can fall from a shopping cart. Do not use on a shopping cart.
- Never use infant carrier or base if it has been damaged or broken or any component is missing. Do not use a cut, frayed or damaged child restraint harness, vehicle seat belt or LATCH belt.
- NEVER use this child restraint with other manufacturer's strollers or with strollers for which it was not intended.
- **ALWAYS MAKE SURE** handle is locked in the upright carrying position before lifting. An unlocked handle could result in serious injury to your child from falling from the child restraint.

LATCH SYSTEM



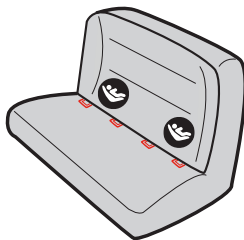
LATCH stands for Lower Anchors and Tethers for CHildren.

The LATCH system can make installation easier without using the vehicle's seat belts. LATCH is a way to secure your child restraint to your vehicle by using the LATCH connectors on your child restraint base. These connectors attach to the lower points in certain vehicle seating positions. Refer to your vehicle owner's manual for LATCH locations.

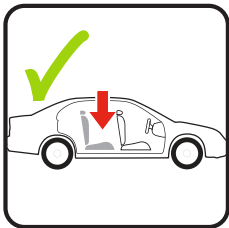
The child restraint base is designed to be used at the standard spacing of 11" (28 cm) from the center of one anchor point to the center of another anchor point. Please refer to your vehicle owner's manual for information about using LATCH in certain seating positions.

LATCH may be used for spacing larger than 11" (28 cm) ONLY if your vehicle manufacturer allows it.

If your vehicle does not have lower anchor points, you can still install your child restraint with the vehicle's belt system.



VEHICLE SEAT LOCATIONS



⚠ WARNING!

- Failure to place the child restraint in the correct seating positions increases the risk of serious injury or death.
- DO NOT place rear-facing child seat on front seat with airbag. DEATH or SERIOUS INJURY can occur.
- The back seat is the safest place for children 12 and under. Owners of vehicles with airbags should refer to their owner's manual for child restraint installation instructions.
- The VEHICLE seat must face forward.
- NEVER place the child restraint on any vehicle seat that does not lock. Folding seats can fall forward and could cause serious injury to your child in a vehicle crash.



UNSAFE VEHICLE SEAT BELTS

⚠ WARNING! The following types of vehicle seat belts are NOT compatible with this child seat. If any of the belt types listed are in the chosen seating position, choose another seating position within in the vehicle.



Motorized Shoulder
Belt with Lap Belt



Lap or Shoulder
Belt Mounted on
Vehicle Door

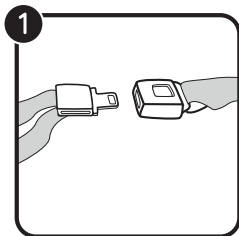


Non-Locking Lap
Belts with Emergency
Locking Retractor
(ELR)



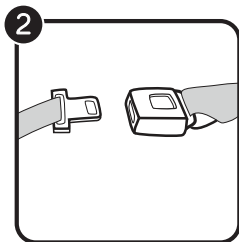
Lap/Shoulder Belts
with 2 Retractors
(including inflatable
seatbelts)

SAFE VEHICLE SEAT BELTS



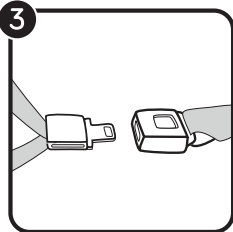
The following vehicle belt systems are SAFE to use for child restraint installation.

1 Lap belt with locking latch plate - The vehicle belt is tightened by pulling on the free end of the strap until the belt is tight.

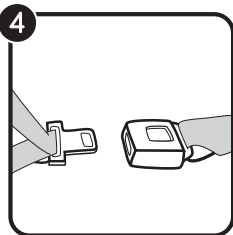


2 Lap belt with automatic locking retractor (ALR)- The automatic locking retractor does not allow the lap belt to get longer once it is buckled. The vehicle belt is tightened by feeding the seat belt webbing into the retractor.

SAFE VEHICLE SEAT BELTS

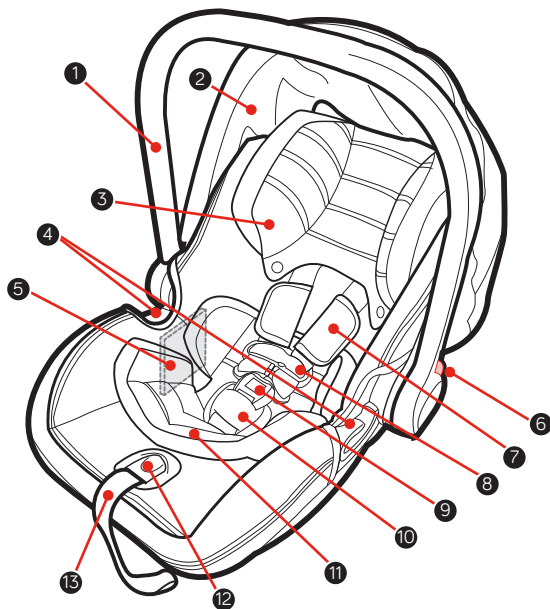


3 Lap/Shoulder belt with locking latch plate - The lap portion of this belt does not loosen once the belt is buckled. The vehicle belt is tightened by pulling up hard on shoulder belt and feeding the webbing into the retractor.



4 Lap/Shoulder belt with sliding latch plate - The latch plate slides freely along the lap/shoulder belt. Vehicle belts with sliding latch plates are typically locked at the retractor by pulling all of the webbing out slowly to switch the retractor. The vehicle belt is tightened after switching the retractor by pulling up hard on shoulder belt and feeding the webbing into the retractor.

SHELL FEATURES



1 Handle

2 Canopy

3 Head Support

4 Lap Belt Guide for Installation
Without the Base

5 Instruction Manual Storage
(Under Seat Pad)

6 Handle Adjustment Button

7 Harness Cover

8 Chest Clip

9 Buckle

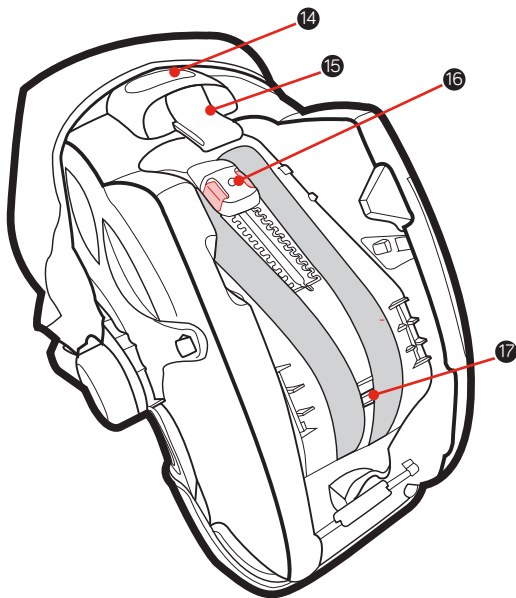
10 Buckle Strap Cover

11 Body Support

12 Harness Adjustment Button

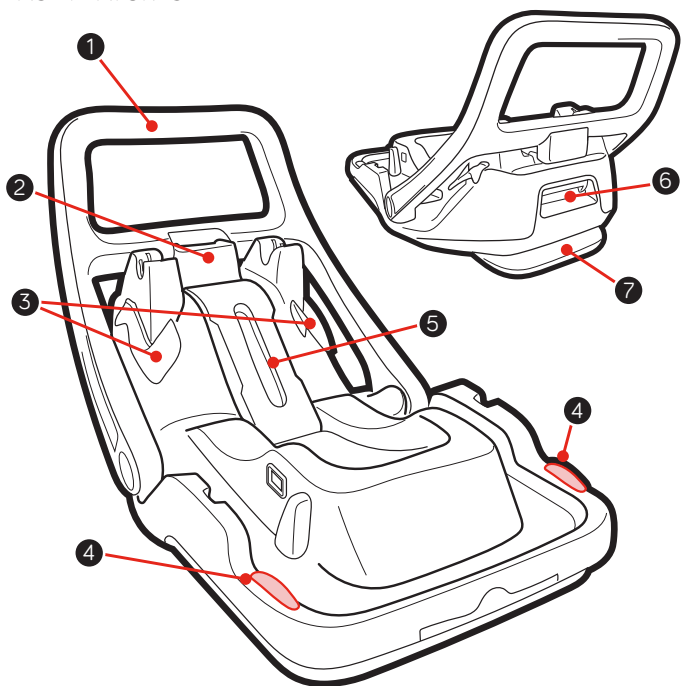
13 Harness Adjustment Strap

SHELL FEATURES



- 14 Base Release Handle
- 15 Taxi-safe Belt Guide for
Installation Without the Base
- 16 Head Support Height
Adjustment
- 17 Crotch Strap Clip

BASE FEATURES



1 Anti-Rebound Bar

2 RapidLock™ Lock-Off Release
Lever

3 Belt Guides

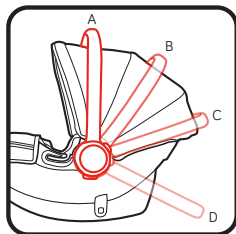
4 Level Indicators

5 RapidLock™ Lock-Off

6 Base Recline Lever

7 Base Recline Foot

ADJUSTING THE HANDLE



There are 4 positions:

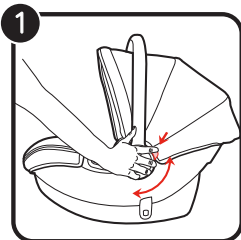
A - Carry position

B/C - Middle positions

D - Stationary position

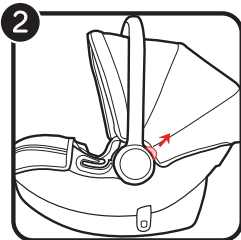
In vehicle - any position.

- 1 Squeeze handle release buttons on both sides. Rotate the handle. The handle will lock into position.

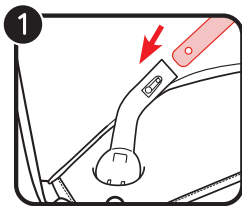


- 2 Both adjustment buttons must pop out to lock handle in place.

⚠ WARNING: Always make sure the handle is securely locked in the upright carrying position before carrying.

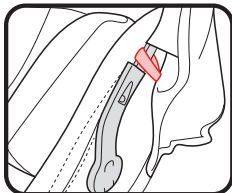


ATTACHING THE CANOPY



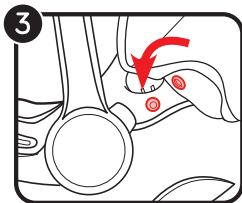
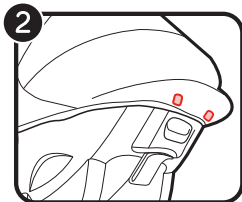
- 1 To attach canopy, insert the canopy bow into the canopy mounting brackets on both sides of the seat until it **CLICKS** into place.

Make sure the elastic loop goes around the mounting bracket when inserting the canopy bow.

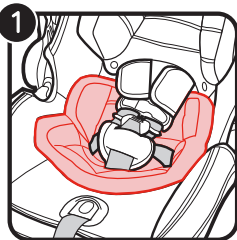


- 2 Attach the two fastening strips on the back of the canopy to the shell.

- 3 Attach the snaps near each canopy mounting bracket.



ACCESSORIES (ON SELECT MODELS)

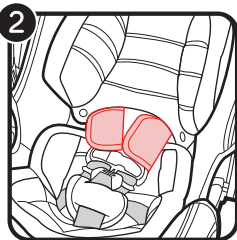


WARNING:

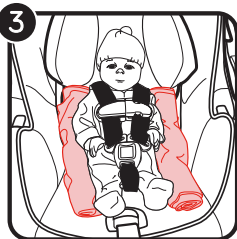
1 To prevent ejection or serious injury, only use the body support for children under 12 lb (5 kg).

For infants weighing under 6 lb (2.7 kg), you must always use the body support.

To remove, pull the body support out from behind the harness straps.

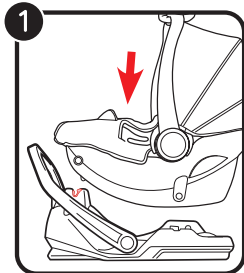


2 Make sure that harness covers do not interfere with the placement of the chest clip at armpit level.



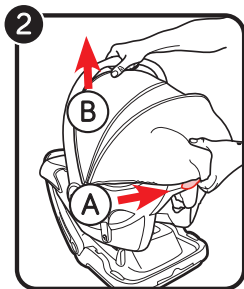
3 If your model does not include a body support, you can use a rolled towel as shown.

ATTACHING & REMOVING THE CAR SEAT

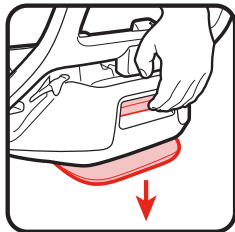


1 Attach the carrier into the base until you hear a **CLICK**. Lift up on the handle of the carrier to make sure that it is securely attached in the base.

2 To remove the seat from the base, pull up the release handle located on the rear of the car seat (A). Lift carrier up (B).



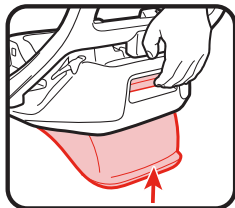
ADJUSTING THE RECLINE



The base has 4 recline positions.

Squeeze on the base recline lever and lift the base to extend the foot.

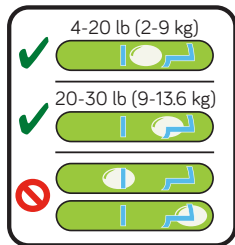
Squeeze on the base recline lever and lower the base to retract the foot.



Check the level indicator for appropriate install.

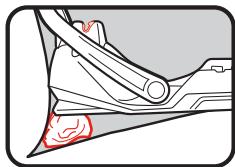
- If the indicator bubble is in the clear area, the restraint is level for infants weighing 4-20 lb (2-9 kg).

- If indicator bubble is partially in the notched area, the restraint is level for a child weighing 20-30 lb (9-13.6 kg) .

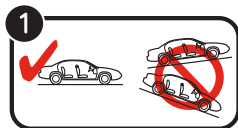


- If the bubble appears outside the blue lines, the child restraint is NOT level. You must adjust your recline position.

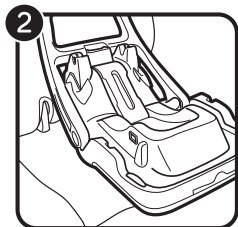
If the level indicator bubble is still not within the appropriate area for your infant's weight when the foot is completely extended, then raise the foot and place a rolled towel under the foot until the bubble is within the appropriate area.



BASE INSTALLATION - LATCH

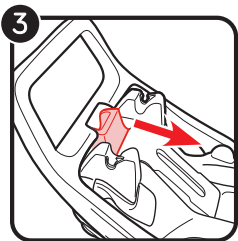


1 Before installing base, make sure vehicle is on level ground.

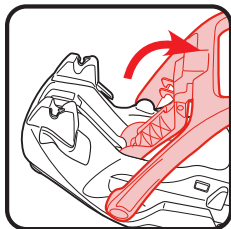


2 Place the base flat on the vehicle seat. Push it back until the front of the base touches the vehicle seat back. Center the base between the lower LATCH anchors.

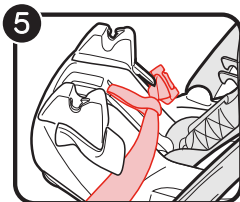
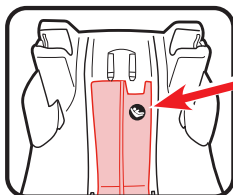
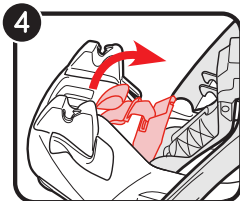
If allowed by your Vehicle Owner's Manual, the center seating position may be used if the anchor spacing is 11" (28 cm) or greater.



3 Pull the RAPIDLOCK™ release lever and raise the lock-off to expose the LATCH storage door.



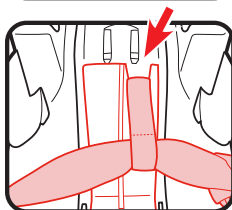
BASE INSTALLATION - LATCH



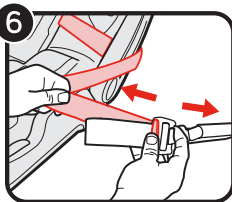
4 Swing open the LATCH storage door, and pull out the LATCH connectors.

5 Close the storage door and lay the LATCH strap across the base.

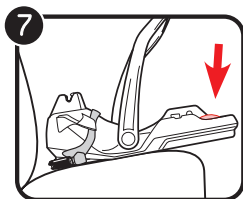
Make sure the LATCH strap goes through the notch on top and the strap lays on top of the LATCH storage door.



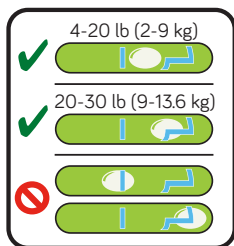
6 Extend the LATCH strap to its maximum length by pressing the gray button and pulling on the strap.



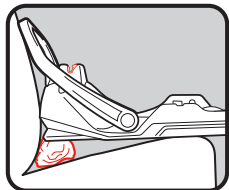
BASE INSTALLATION - LATCH



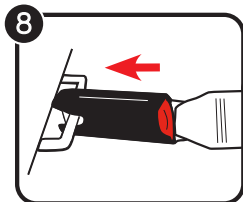
- 7 Check the level indicator on the base. The bubble must be completely within the area of your child's weight. For infants weighing 4-20 lb (2-9 kg) the bubble must rest within the clear area. For children weighing 20-30 lb (9-13.6 kg) the bubble must rest within the notched area. To recline, review page 21.



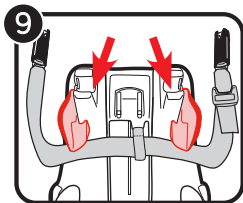
Note: If the foot is in the most raised position and the bubble is out of the area of your child's weight you can place a tightly rolled towel or pool noodle under the front end of the base to achieve the proper recline.



- 8 Connect LATCH Hooks to Vehicle's Lower LATCH Anchors. LATCH strap should lay as flat as possible and not be twisted.



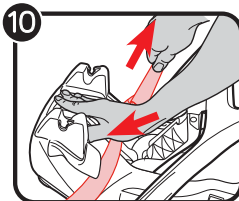
BASE INSTALLATION - LATCH



9 Make sure LATCH strap goes under the belt guides.

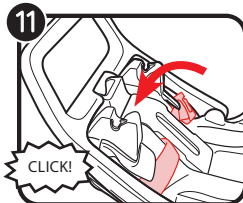
10 Press down firmly on the top of the base while pulling on the free end of the LATCH strap to remove all of the slack.

Do not pull on the strap with excessive force.

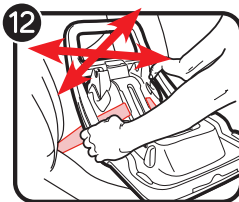


11 Shut the RAPIDLOCK™ lock-off on top of the LATCH strap. You may also shut the lock-off on top of the loose end of the LATCH strap as well.

Close the lock-off until you hear a "CLICK".



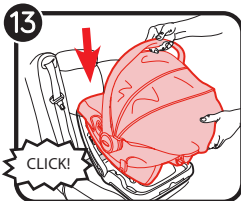
⚠ WARNING: Keep hands away from the lock-off area when closing the lock-off.



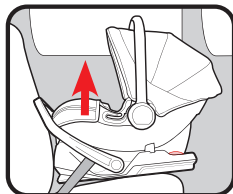
12 Test for tightness. Grab the sides of the base where the LATCH strap is and push and pull the base from side to side and front to back.

If the base moves less than 1" (2.5 cm), it is tight enough.

BASE INSTALLATION - LATCH

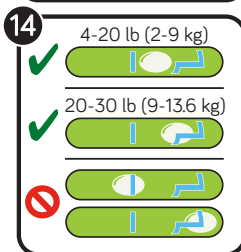


- 13 Place car seat into the base. Push down on the front of the car seat and handle until you hear a “CLICK”. Test to make sure the car seat is attached by pulling up on the front corners of car seat.

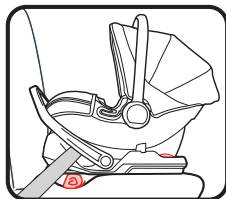


- 14 Check the level indicator on the base. The bubble must be completely within the area of your child's weight.

Check the level indicator with child in the child restraint.

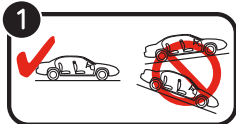


For infants weighing 4-20 lb (2-9 kg) the bubble must rest within the clear area. For children weighing 20-30 lb (9-13.6 kg) the bubble must rest within the notched area. To recline, review page 21.

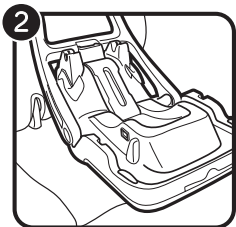


Note: If the foot is in the most raised position and the bubble is out of the area of your child's weight you can place a tightly rolled towel or pool noodle under the front end of the base to achieve the proper recline.

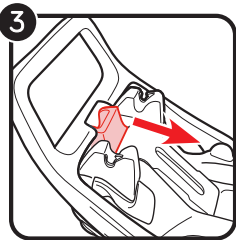
BASE INSTALLATION - LAP/SHOULDER BELT



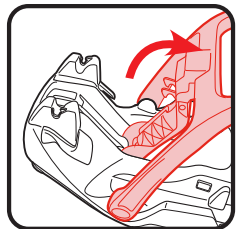
1 Before installing base, make sure vehicle is on level ground.



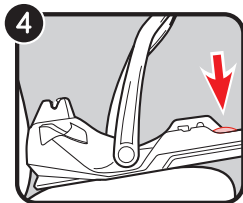
2 Place the base flat on the vehicle seat. Push it back until the front of the base touches the vehicle seat back.



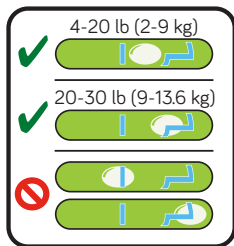
3 Pull the RAPIDLOCK™ release lever to open the lock-off.



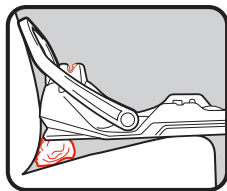
BASE INSTALLATION - LAP/SHOULDER BELT



- 4 Check the level indicator on the base. The bubble must be completely within the area of your child's weight. For infants weighing 4-20 lb (2-9 kg) the bubble must rest within the clear area. For children weighing 20-30 lb (9-13.6 kg) the bubble must rest within the notched area. To recline, review page 21.

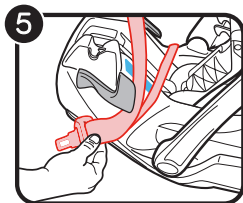


Note: If the foot is in the most raised position and the bubble is out of the area of your child's weight you can place a tightly rolled towel or pool noodle under the front end of the base to achieve the proper recline.

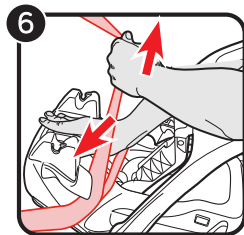


- 5 Thread the lap portion of the vehicle seat belt through the blue rear-facing belt path (also marked with a blue label) and buckle it. The seat belt should lay as flat as possible and not be twisted.

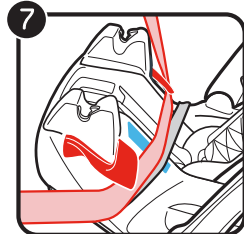
Review your vehicle's owner's manual for vehicle seat belt use



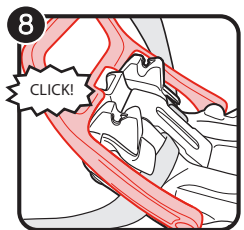
BASE INSTALLATION - LAP/SHOULDER BELT



- 6 Press down firmly on the top of the base while pulling on the shoulder belt to remove all the slack.
Do not pull on the strap with excessive force.



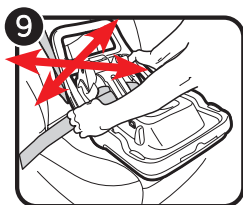
- 7 Thread the shoulder portion of the vehicle seat belt through the blue rear-facing belt path (also marked with a blue label) and under the belt guides. The seat belt should lay as flat as possible and not be twisted.
Make sure both lap and shoulder belt goes under the belt guides



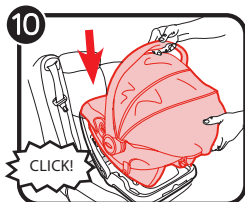
- 8 Shut the RAPIDLOCK™ lock-off on top of the seat belt strap.
Close the lock-off until you hear a "CLICK".

⚠ WARNING: Keep hands away from the lock-off area when closing the lock-off.

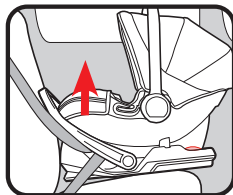
BASE INSTALLATION - LAP/SHOULDER BELT



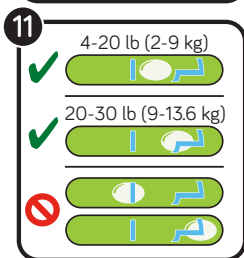
- 9 Test for tightness. Grab the sides of the base where the seat belt is and push and pull the base from side to side and front to back. If the base moves less than 1" (2.5 cm), it is tight enough.



- 10 Place car seat into the base. Push down on the front of the car seat and handle until you hear a "CLICK". Test to make sure the car seat is attached by pulling up on the front corners of car seat.

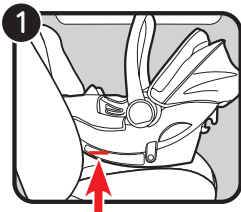


- 11 Check the level indicator on the base. The bubble must be completely within the area of your child's weight. Check the level indicator with child in the child restraint. For infants weighing 4-20 lb (2-9 kg) the bubble must rest within the clear area. For children weighing 20-30 lb (9-13.6 kg) the bubble must rest within the notched area. To recline, review page 21.

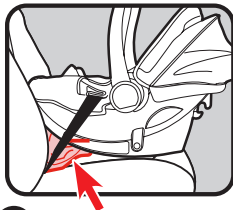


Note: If the foot is in the most raised position and the bubble is out of the area of your child's weight you can place a tightly rolled towel or pool noodle under the front end of the base to achieve the proper recline.

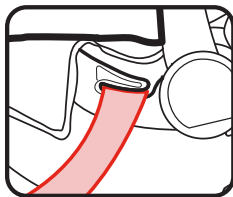
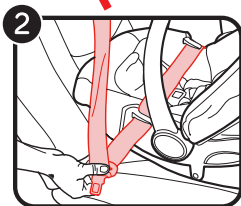
INSTALL WITHOUT BASE



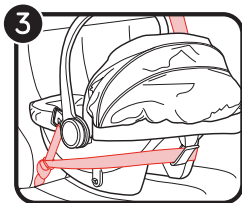
- 1 Place the car seat on the vehicle seat. Push it back until the front of the car seat touches the vehicle seat back. Check the rear-facing level line. The red level line on the side of the seat **MUST BE LEVEL** with the ground. If needed, rolled towels may be placed under the base, at the vehicle seat crease, until the level line is level with the ground.



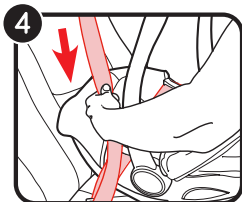
- 2 Thread vehicle seat belt through the blue rear-facing belt path (also marked with a blue label) and buckle it. The seat belt should not be twisted.



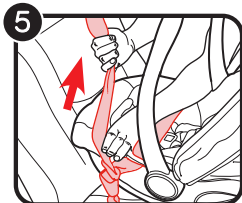
INSTALL WITHOUT BASE



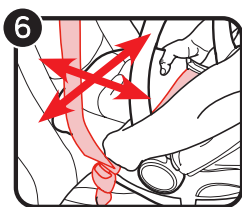
3 If your shoulder belt is long enough, you may route the shoulder belt behind the seat and through the Taxi-safe seat belt guide as shown.



4 Lock the vehicle seat belt. In most vehicles today, **slowly pull the shoulder belt all the way out** and then let it go back in. You will hear a “clicking” sound. Slowly pull out on the belt and it should be locked. If not, review your car’s owner’s manual and page 13.

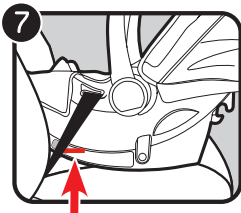


5 Tighten the vehicle seat belt. Lay your forearm across the car seat at the belt path and push down. Pull on the shoulder belt to tighten while feeding the slack back in the retractor.



6 Test for tightness. Grab the sides of the car seat where the seat belt is and push and pull the car seat from side to side and front to back. If the car seat moves less than 1” (2.5 cm), it is tight enough.

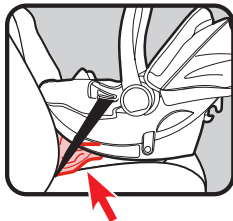
INSTALL WITHOUT BASE



- 7 Check the rear-facing level line. The red level line on the side of the seat **MUST BE LEVEL** with the ground.

Check the level indicator with child in the child restraint.

If needed, rolled towels may be placed under the base, at the vehicle seat crease, until the level line is level with the ground.



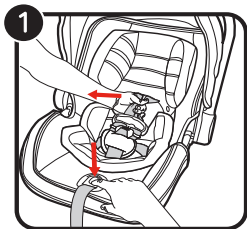
PLACING CHILD IN THE CARRIER



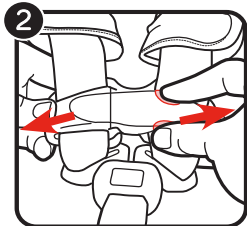
⚠ WARNING:

Improper placement of the harness straps and buckle strap increases the risk of serious injury or death in a sudden stop or vehicle crash.

Do not put snowsuits or bulky garments on your child when placing them in the car seat. Bulky slothing can prevent the harness straps from being tightened properly. To keep child warm, buckle your child in the car seat and place a blanket around the child or place the child's coat on backwards after buckling in.



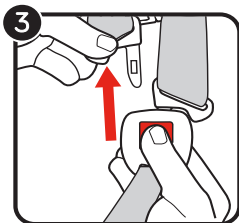
Depending on the size of the child, the positions of the harness straps, buckle straps and waist strap will have to be adjusted.



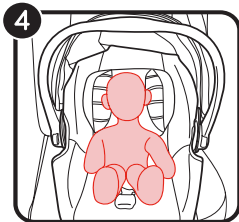
1 Rotate handle out of the way. Loosen harness straps by pushing down on the harness release lever while pulling out on the harness straps.

2 Release the chest clip by squeezing the release buttons and pull apart.

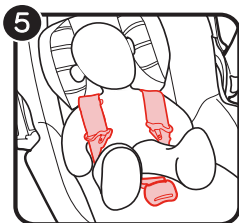
PLACING CHILD IN THE CARRIER



3 Press on the red button and pull the buckle tongues out and place harness straps off to the side.

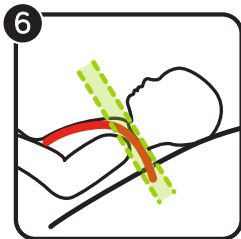


4 Place child in the seat. Make sure their back is flat against the car seat back.

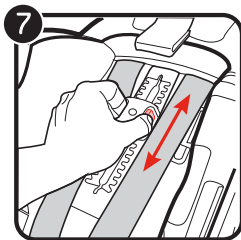


5 Place harness straps over child's shoulders.

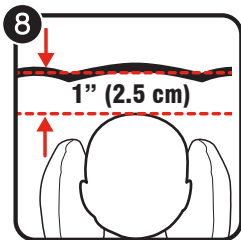
PLACING CHILD IN THE CARRIER



6 Check harness height. Harness straps must be at or just below the child's shoulders.

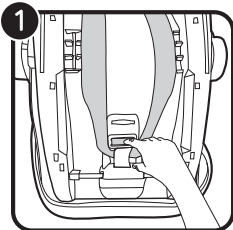


7 Adjust the head support to adjust harness height. Remove child. From the back of the seat, squeeze the head support adjustment buttons and move it up or down to the correct harness position.

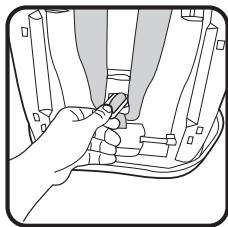


8 Top of child's head must be at least 1" (2.5 cm) below the top of the child restraint.

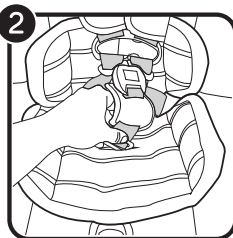
ADJUSTING THE BUCKLE STRAP



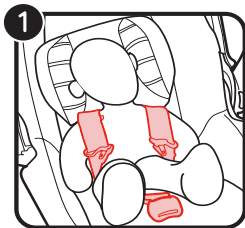
1 Turn the child restraint over and push the belts out of the way. Push the metal retainer through the slot and from the front pull the buckle strap out of the seat.



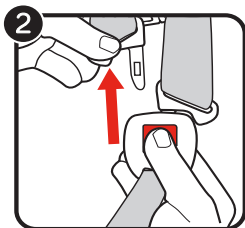
2 Push the metal retainer through the slot that fits closest to your child without being underneath the child. Make sure the buckle's metal retainer is completely through the pad and shell. Pull up on the buckle to verify.



SECURING THE CHILD IN THE RESTRAINT

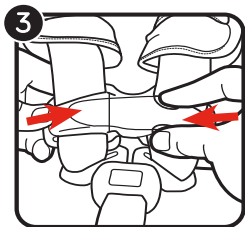


1 Place your child in the seat and place the harness straps over their shoulders.



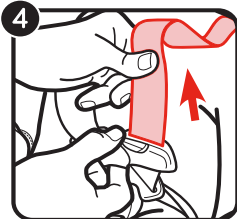
2 Insert the buckle tongues into the buckle as shown. Make sure you hear them CLICK into place.

Note: DO NOT use child restraint if buckle tongues do not CLICK into the buckle. Try cleaning the buckle. If this does not remedy the problem, please call consumer care before using the child restraint.

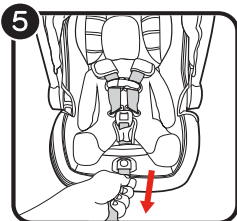


3 Fasten chest clip together and center on child's chest level with their armpit.

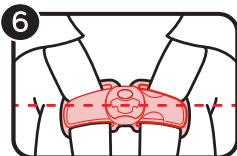
SECURING THE CHILD IN THE RESTRAINT



4 Pull all of the slack out from around the waist. Pull up on the harness while pushing the chest clip down. Do this on both sides.



5 Slowly pull harness adjuster strap to make the shoulder straps snug around the child's shoulders. Be careful not to allow the chest clip to slide up into their neck when tightening. Make sure the straps are flat, not twisted, and snug.



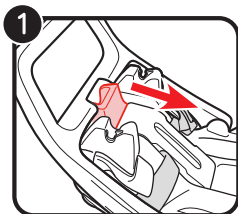
6 Raise the chest clip to child's armpit level.



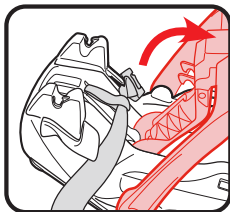
7 If you can pinch a fold in the strap, it is not snug and should be tightened further.

A snug harness should not allow any slack. It lies in a relatively straight line without sagging. It does not press on the child's flesh or push the child's body into an unnatural position.

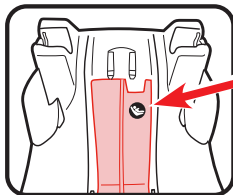
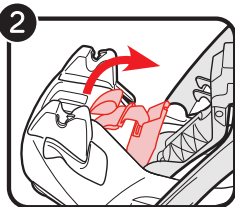
LATCH STORAGE



- 1 Pull the RAPIDLOCK™ release lever and raise the lock-off to expose the LATCH storage door.

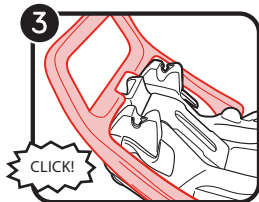
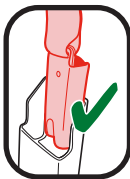
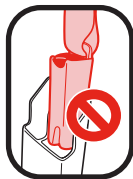


LATCH STORAGE



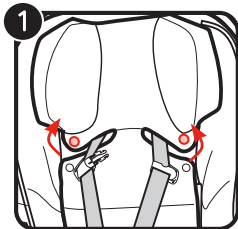
2 Swing open the LATCH storage door, and insert the LATCH connectors into the storage slots. Tuck the LATCH straps into the storage compartment and close the storage door.

Make sure the LATCH connectors are stored facing the correct direction.



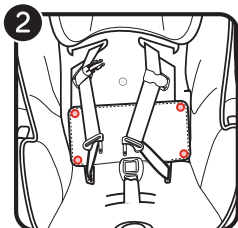
3 Close the RAPIDLOCK™ lock-off until you hear a "CLICK".

TO REMOVE HEAD SUPPORT PAD



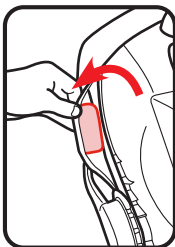
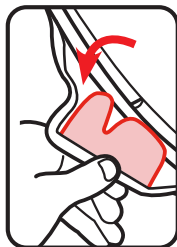
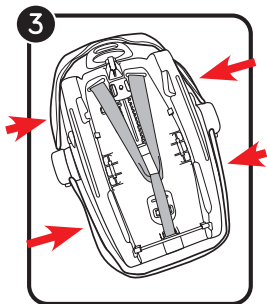
- 1 Unfasten snaps on both sides of head support pad. Pull out from around harness straps and pull pad away from head support. Reverse the steps to reattach the head support pad to the head support. Make sure harness straps are not twisted.

TO REMOVE SEAT PAD

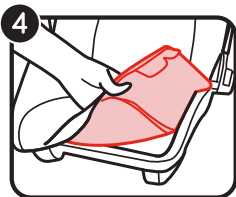


- 2 Unfasten the 4 snaps on the seat pad.

- 3 Pull out the 4 plastic flaps from sides of seat.



TO REMOVE SEAT PAD

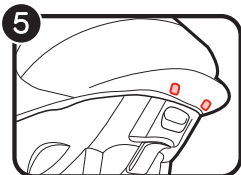


4 Pull pad off shell.

Reverse the steps to reattach the pad to the shell.

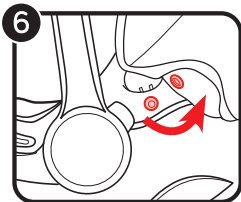
Make sure harness straps are not twisted.

TO REMOVE CANOPY



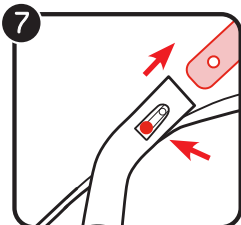
5 Undo the two fastening strips on the back of the canopy.

6 Undo the snaps on the sides of the canopy from the seat pad.



7 Push the release button on the canopy arm while pulling on the canopy to remove. Repeat on the other side.

Reverse the steps to reattach the canopy to the shell.



CARE AND MAINTENANCE

Cleaning the Seat Pad:

Refer to the care tag on your seat pad for washing instructions. NEVER use carrier without the seat pad attached.

Cleaning the Shell:

Spot clean using warm water and mild soap. Do not use any other cleaning agents or bleach.

Cleaning the Canopy:

Machine wash pad and canopy in cold water with gentle soap on delicate cycle and drip-dry. DO NOT USE BLEACH.

Cleaning Harness and LATCH:

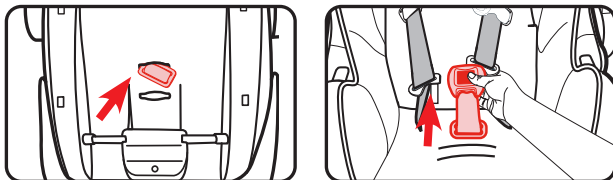
Surface wash only with mild soap and damp cloth. DO NOT IMMERSE THE HARNESS STRAPS or LATCH STRAP IN WATER. Doing so may weaken the straps.

CARE AND MAINTENANCE

Cleaning the Buckle:

Remove buckle to clean.

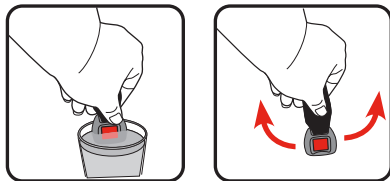
From the bottom of car seat, insert the buckle's metal clip up through shell and pad. From the front, pull buckle out of the pad and shell.



To clean, place in a cup of warm water and gently agitate the buckle. Press the red button several times while in the water.

DO NOT SUBMERGE THE BUCKLE STRAP. DO NOT USE SOAPS, HOUSEHOLD DETERGENTS or LUBRICANTS.

Shake out excess water and allow to air dry. Repeat steps as needed until it fastens with a **CLICK**. Re-insert the buckle into the same slot it was removed. Pull up on crotch buckle to make sure it is secured.



WARNING! Inspect and clean buckle from time to time to remove any objects or debris that could prevent latching.

LIMITED WARRANTY

This product is warranted against defective materials or workmanship for one year from the date of original purchase. Proof of purchase is required.

The warranty does not include:

- Normal wear and tear
- Corrosion or rust
- Incorrect assembly or the installation of third party parts or accessories not compatible with the original design.
- Accidental or intentional damage, abuse, or neglect.
- Commercial Use
- Improper storage/care of the unit

This warranty specifically excludes claims for indirect, incidental, or consequential damages. The implied warranties of merchantability and fitness for a particular purpose is according to the specific warranty period for this model unit at time of purchase.

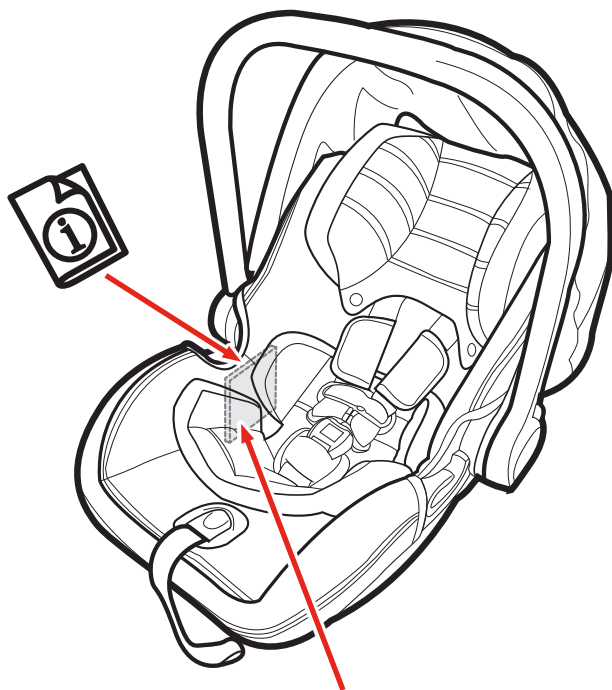
Some states do not allow the exclusion or limitation of incidental or consequential damages, so the above limitations or exclusions may not apply to you. This warranty gives you specific legal rights and you may also have other rights which vary from state to state. To know what your legal rights are in your state, consult your local or state consumer affairs office or your state's Attorney General.

Note: When contacting Baby Jogger regarding your product, please have the serial number and manufacturing date ready. It can be found on the underside of the car seat and inside of the base.

Consumer Care Contact Information:

Email: customerservice@babyjogger.com
Call: 1-800-241-1848
between 8:30am-5:30pm EST.Mon-Fri
Mail: Baby Jogger, LLC
4110 Premier Drive
High Point, NC 27265

INSTRUCTION STORAGE



Store the instruction manual under the seat pad as shown.



newell
BRANDS

Baby Jogger, LLC

5 Concourse Parkway, 8th Floor, Atlanta, GA 30328
1.800.241.1848 • www.babyjogger.com