



Maui On-the-Go

FROZEN CONCOCTION MAKER*

Unplug and unwind with your new Margaritaville Maui On-the-Go Frozen Concoction Maker®.

You're just a few steps away from chilling out with your favorite frozen drink and letting your worries melt away! Before getting started, make sure your drink maker is fully charged — it takes just under 2 hours, but it's definitely worth the wait.

Quick START Guide



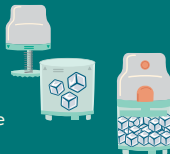
1. Get started by unlocking the top. Slide up to unlock, then turn counterclockwise and lift.



2. Pour liquid ingredients into bottom mixing jar using pre-marked measurements or recipe on margaritavillecargo.com (be sure you don't go past the 8 ounce max line).



3. Twist and remove top from the ice chamber, and fill with ice to the textured line on the inside of the ice sleeve. Reassemble, making sure you line up the arrows for the perfect seal. Careful, the blades are very sharp.



4. Ready for the fun part? Close and lock the top with a clockwise quarter turn, and press the button to start creating your frozen cocktail.



5. Pour the shaved ice drink directly into your favorite glasses (you'll make two 9-ounce drinks per cycle) or drink it straight from the jar. We don't judge!



PLEASE DRINK RESPONSIBLY.

Do not operate seaplanes, sailboats, heavy machinery, or other motorized vehicles while consuming frozen cocktails.

Tips AND Tricks

OPERATIONAL MODES:



ONE TAP = AUTO BLEND

The auto blend program creates the perfect margarita in just 90 seconds. No guesswork, no worries



TWO TAPS = SHAVE MORE ICE

Drink watered down? Want to make a snow cone? Tap twice to shave extra ice



PRESS AND HOLD = MANUAL BLEND

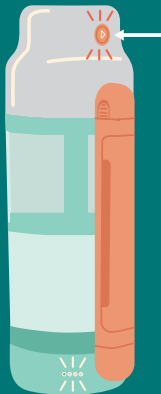
The manual program blends and shaves ice at the same time, for custom creations



TAP POWER BUTTON = STOP/RESTART

Stop or restart the drink-making process at anytime with a quick tap

TROUBLESHOOTING:



The power button will flash for about 3 seconds:

- If the ice shaver jams or is overloaded. Open the top, clear the ice jam, and ensure the ice chamber isn't filled past the max line.
- If the blending motor jams or stalls. Try shaking the device to restart (often the jam will clear). If it doesn't start after shaking, open the top or bottom to clear the jam (careful with the blades).



A flashing battery light tells you it's time to recharge your concoction maker to keep the party going and going.

TIPS:

Do not fill the blending jar or the ice chamber past the max-fill line.

For optimal results, rinse the reservoir and sleeve after each use and use crescent-shaped ice.

To avoid damage to the shaving or blending motor, do not immerse in water. Wipe clean with a damp cloth or fill blending jar with a small amount of soapy water and run the manual program to clean the jar. Rinse out carefully to avoid getting water on the electrical components. To help prevent unit malfunction, keep electrical contacts clean and dry.

For your safety, the blending blades are blunt for mixing and also help maintain the perfect drink consistency, by preventing over blending. Adding ice or fruit to the blending jar may cause jamming.

The ice shaver periodically stops and reverses to avoid jamming and increase ice-shaving efficiency.

Scan to watch how-to video
to Get the Party Started

