



Kerosene Lantern

Instructions for use



4010049207 (ECN20067638-04)

Limited Five Year Warranty

The Coleman Company, Inc. ("Coleman") warrants that for a period of five (5) years from the date of original retail purchase, this product will be free from defects in material and workmanship. Coleman, at its option, will repair or replace this product or any component of the product found to be defective during the warranty period. Replacement will be made with a new or remanufactured product or component. If the product is no longer available, replacement may be made with a similar product of equal or greater value. This is your exclusive warranty.

This warranty is valid for the original retail purchaser from the date of initial retail purchase and is not transferable. Keep the original sales receipt. Proof of purchase is required to obtain warranty performance. Coleman dealers, service centers, or retail stores selling Coleman® products do not have the right to alter, modify or in any way change the terms and conditions of this warranty.

What This Warranty Does Not Cover

This warranty does not cover normal wear of parts, parts that are not genuine Coleman® parts, or damage resulting from any of the following: negligent use or misuse of the product; commercial use of the product; use contrary to the operating instructions; disassembly, repair or alteration by anyone other than Coleman or an authorized service center. Further, the warranty does not cover Acts of God, such as fire, flood, hurricanes and tornadoes. Warranty void if damage to the product results from the use of a part other than a genuine Coleman® part.

COLEMAN SHALL NOT BE LIABLE FOR DEFECTS THAT ARE CAUSED BY THE USE OF UNAUTHORIZED PARTS OR SERVICE. COLEMAN SHALL NOT BE LIABLE FOR ANY INCIDENTAL OR CONSEQUENTIAL DAMAGES CAUSED BY THE BREACH OF ANY EXPRESS OR IMPLIED WARRANTY OR CONDITIONS. EXCEPT TO THE EXTENT PROHIBITED BY APPLICABLE LAW, ANY IMPLIED WARRANTY OF MERCHANTABILITY OR FITNESS FOR A PARTICULAR PURPOSE IS LIMITED IN DURATION TO THE DURATION OF THE ABOVE WARRANTY OR CONDITIONS. SOME STATES, PROVINCES, OR JURISDICTIONS DO NOT ALLOW THE EXCLUSION OR LIMITATION OF INCIDENTAL OR CONSEQUENTIAL DAMAGES OR LIMITATIONS ON HOW LONG AN IMPLIED WARRANTY LASTS, SO THE ABOVE LIMITATIONS OR EXCLUSION MAY NOT APPLY TO YOU. THIS WARRANTY GIVES YOU SPECIFIC LEGAL RIGHTS, AND YOU MAY ALSO HAVE OTHER RIGHTS THAT VARY FROM STATE TO STATE OR PROVINCE TO PROVINCE.

How to Obtain Warranty Service

Take the product to an authorized Coleman service center. You can find the nearest authorized Coleman service center by visiting www.coleman.com or calling 1-800-835-3278 or TDD 1-316-832-8707 in the United States or 1-800-387-6161 in Canada. If a service center is not conveniently located, attach to the product a tag that includes your name, address, daytime telephone number and description of the problem. Include a copy of the original sales receipt. Carefully package the product and send either by courier or insured mail with shipping and insurance prepaid to:

For products purchased in the United States:

The Coleman Company, Inc.
3600 North Hydraulic
Wichita, KS 67219 U.S.A.

For products purchased in Canada:

Sunbeam Corporation (Canada) Limited
DBA Jarden Consumer Solutions
20B Hereford Street
Brampton, ON L6Y 0M1

The costs of transporting the product to Coleman or an authorized service center for warranty service is the responsibility of the purchaser.

Do not mail products with fuel in tanks, or with disposable propane cylinders.

DO NOT RETURN THIS PRODUCT TO THE PLACE OF PURCHASE.

If you have any questions regarding this warranty please call 1-800-835-3278 or TDD 1-316-832-8707 in the United States or 1-800-387-6161 in Canada.



The Coleman Company, Inc. • 3600 North Hydraulic • Wichita, KS 67219 U.S.A.
1-800-835-3278 • TDD: 1-316-832-8707

© 2019 The Coleman Company, Inc. All rights reserved.

Coleman®, and the shape of the lantern are registered trademarks of The Coleman Company, Inc.

www.coleman.com

FOR YOUR SAFETY

Do not store or use gasoline or other liquids with flammable vapors in the vicinity of this or any other appliance.

CALIFORNIA PROPOSITION 65:

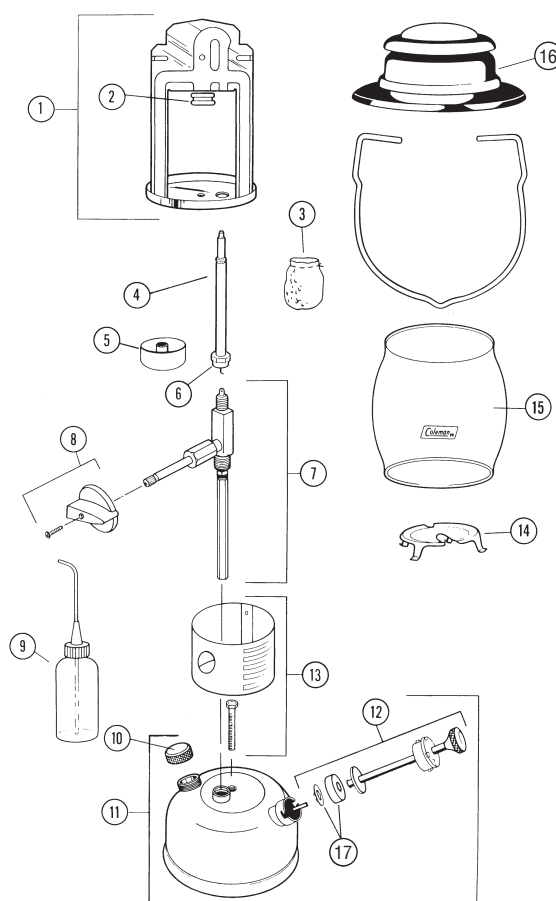
WARNING: This fuel, and byproducts or combustion of this fuel, contains Carbon Monoxide, which is known to the State of California to cause cancer and birth defects or other reproductive harm. For more information go to www.P65Warnings.ca.gov

⚠ DANGER



CARBON MONOXIDE HAZARD

- This appliance can produce carbon monoxide which has no odor.
- Using it in an enclosed space can kill you.
- Never use this appliance in an enclosed space such as a camper, tent, car or home.



Parts List for Coleman® Lantern Model 300001138

ITEM No.	PART No.	DESCRIPTION
1	635-3265	BURNER ASSY.
2	635-3155	BURNER CAP
3	#11	MANTLE
4	3000005095	GENERATOR (K-6)
5	201-5101	PREHEATER CUP
6	288-1621	GENERATOR NUT
7	639-6571	VALVE ASSY.
8	288C1501	KNOB ASSY.
9	201-5511	ALCOHOL BOTTLE
10	3000005086	FUEL CAP
11	639-5151	FOUNT ASSY.
12	242J5201	PUMP PLUNGER ASSY.
13	N/A	COLLAR AND BOLT
14	635-1151	HEAT SHIELD
15	R690A0581	GLOBE
16	639A4851	VENTILATOR
17	639-1091	PUMP CUP & NUT

Things you should know

1. Read this manual carefully before assembling, using or servicing these lanterns. Keep this manual for future reference.
2. Keep lantern area clear and free from combustible materials, gasoline and other flammable vapors and liquids.
3. Do not obstruct the flow of combustion and ventilation air.
4. Carry a spare set of Coleman® Mantles. Once burned, a mantle is fragile and can be damaged if touched or dropped.
5. This product was designed for Coleman® Kerosene. Other brands of kerosene may vary in quality and can affect generator life. If you are having a problem with your lantern or generator using a different brand, replace the generator and try switching to Coleman® kerosene.
6. Rinse tank occasionally with fresh fuel to remove sediment, gum formations, and moisture accumulations. If lantern is to be used for standby service, rinse and refill annually with fresh fuel.
7. Oil pump periodically to keep it working smoothly. An arctic weather pump kit is available for use at -20°C (0° F) temperatures.
8. Part of the brightness control is located in the generator. If the lantern fails to adjust from high to low properly, replace the generator.
9. During operation, carry the lantern using the bail.
10. The usual storage areas for camping and picnic equipment are the basement, attic, or garage. To avoid the accumulation of dust, cobwebs, etc., that is common in these storage areas, place your lantern in a plastic bag and seal it with a rubber band.
11. For repair service call one of the numbers listed below for location of your nearest Coleman Service Center. If lantern must be mailed to Service Center, attach your name, address, and a description of problem to product and mail to Service Center prepaid, less globe and ventilator to prevent breakage. If necessary to write the Service Center or factory, refer to your lantern by model number. Do not send fuel.
12. If not completely satisfied with performance of this product, please call one of the numbers listed on previous page.

Follow instructions and warnings to avoid fires, serious injury, or death.

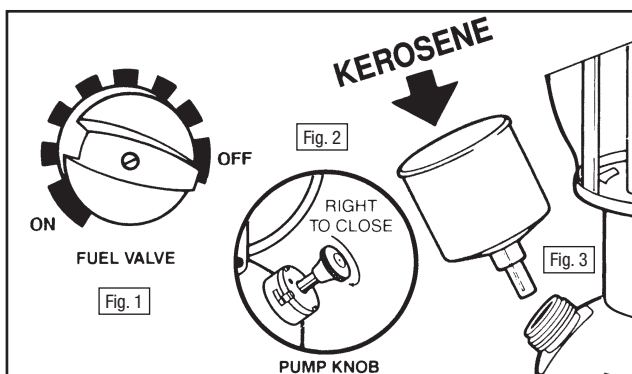
▲ WARNING:

1. Kerosene is extremely flammable; handle with care. Fuel vapors are invisible, explosive, and can be ignited by ignition sources many feet away.
2. This lantern is designed to use kerosene. Never use Coleman® fuel, gasohol, or gasoline.
3. Store fuel in a clean, properly marked container away from flame (including pilot lights), other sources of ignition, or excessive heat.
4. Always fill outdoors. Never fill lantern, loosen or remove fuel cap while lantern is lighted, near flame (including pilot lights), other ignition sources, or while top of lantern is hot to touch.
5. Always light and use lantern outdoors; never inside house, camper, tent, or other unventilated or enclosed areas.
6. This lantern consumes air (oxygen). Do not use in unventilated or enclosed areas to avoid endangering your life.
7. Keep lantern away from flammables. Never allow fabric, clothing, or any flammable material to come within 4 ft. (1.2 m) of the top and 1 ft. (0.3 m) of the sides of the lantern.
8. Use for lighting only. Never alter in any way or use with any device or part not expressly approved by Coleman. Do not use as a space heater.
9. Replace any mantle with a hole in it. A hole can cause lantern to overheat and create a hazard.
10. Keep out of reach of children.
11. Allow to cool completely before transporting. Transport in an upright position.

To Fill

Always fill outdoors. Never fill lantern, loosen or remove fuel cap while lantern is lighted, near flame (including pilot lights), other ignition sources, or while top of lantern is hot to touch.

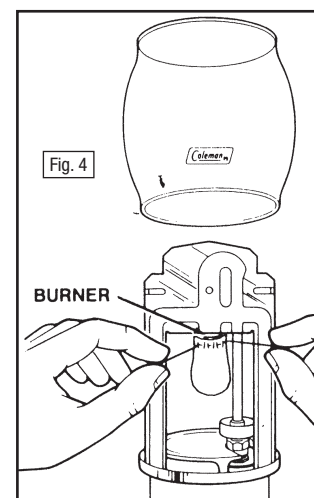
- Turn FUEL VALVE to "OFF". (Fig. 1)
- Close PUMP KNOB firmly. Turn in direction of arrow. (Fig. 2)
- Remove FUEL CAP. Use a Coleman® filter funnel and fill with clean, fresh fuel. Lantern must be in a level position. DO NOT TIP. (Fig. 3)
- Replace FUEL CAP on lantern and on fuel container. Tighten firmly. WIPE UP ANY SPILLED FUEL AND DISPOSE OF IN A SAFE PLACE.



To Tie On Mantles

Always use genuine Coleman® mantles. Replace damaged mantles to avoid overheating or damaging lantern.

- Unscrew ball nut at top of lantern and remove ventilator and glass globe.
- Tie MANTLE around groove in BURNER. (Fig. 4) Distribute folds of MANTLE evenly. Cut off surplus string 1/4" from knot.
- Light bottom of MANTLE evenly. Burn until nothing but white ash remains. Once the MANTLE has been burned it is very fragile. Be careful not to touch it with finger or match.
- Allow MANTLE to cool before lighting lantern.
- Install GLOBE, VENTILATOR, and BAIL.



Leak Check

▲ WARNING

- Always leak test appliance outdoors away from any open flames.
- Do not use appliance until all leak tests have been successfully completed.

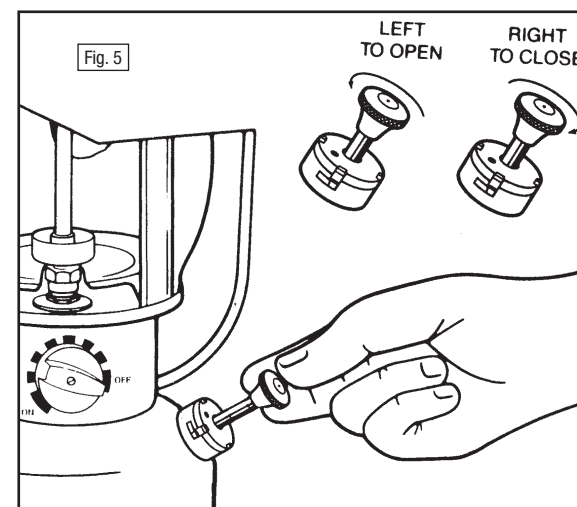
- Make sure FUEL VALVE is fully "OFF".
- After pressurizing fount CHECK FOR LEAKS in one or more ways: Look for a fuel mist or a wet appearance of fuel on surfaces. Listen for hiss of escaping gas. Smell for fuel odor. Never use a flame. Do not use if leaking. During normal use, shut the lantern off if fuel or flame is observed coming from the generator nut (or anywhere else on the lantern).

To Burn

- Light bottom of mantle evenly (move match back and forth) and leave to burn. Once mantle has been burned it is very fragile. Be careful not to touch it with your finger or with a match.
- Replace the glass globe, ventilator and ball nut.

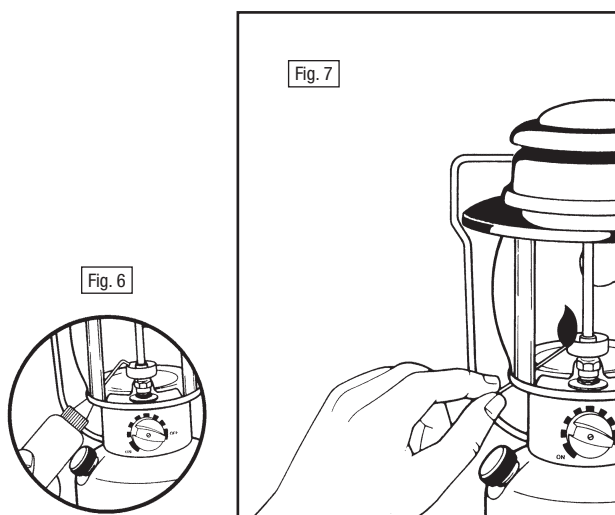
To Pump

- Be sure FUEL VALVE is "OFF" and fuel cap is closed firmly.
- Open pump knob by turning 1 full turn to the left.
- With thumb over hole in PUMP KNOB, pump approximately 30 strokes. If lantern is not full of fuel, more pump strokes are required. GOOD AIR PRESSURE IS IMPORTANT.
- Close PUMP KNOB firmly.



To Light

- Fill PREHEATER CUP with alcohol (do not use gasoline or kerosene) using bottle provided. (Fig. 6)
- Light alcohol with a match through lighter hole. (Fig. 7)
- Allow flame to consume nearly all the alcohol, then turn FUEL VALVE to "ON".
CAUTION: Flames other than at mantle indicate flooding or a leak. Turn FUEL VALVE "OFF", allow flames to burn out and lantern to cool. Carefully review instructions and correct problem before relighting lantern.
- Adjust fuel valve to desired brightness.
- Turn the lantern off by turning fuel valve to "OFF". Light will dim and go out in 1-2 minutes.
- To clean tip, turn FUEL VALVE from "ON" to "OFF" to "ON" several times.
- Additional pumping will be required at intervals. Good air pressure is important.



© 2019 The Coleman Company, Inc. All rights reserved.
Coleman®, Coleman® and the shape of the lantern are registered trademarks of The Coleman Company, Inc.

www.coleman.com