

Sunbeam

GoHeat™ USB Powered Heating Pad

Models: 2100 & 2101

IMPORTANT SAFETY INSTRUCTIONS DO NOT DESTROY

DANGER: TO REDUCE THE RISK OF BURNS, ELECTRIC SHOCK AND FIRE, THIS PRODUCT MUST BE USED IN ACCORDANCE WITH THE FOLLOWING INSTRUCTIONS:

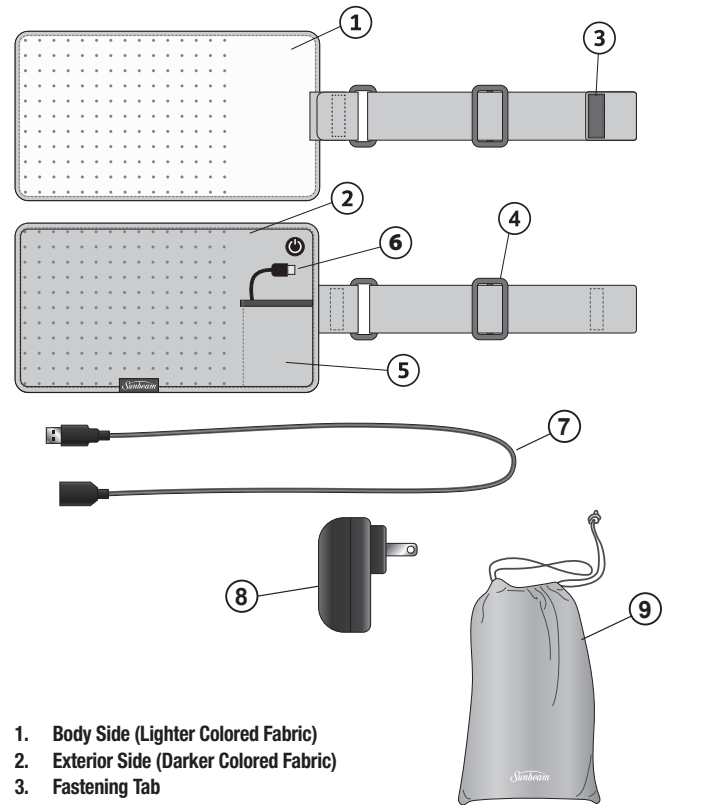
1. READ ALL INSTRUCTIONS.
2. DO NOT USE WHILE SLEEPING OR ON SOMEONE WHO IS SLEEPING.
3. DO NOT USE ON AN INFANT OR ON AN ANIMAL.
4. THIS PAD IS NOT TO BE USED ON OR BY AN INVALID, SLEEPING, HELPLESS OR UNCONSCIOUS PERSON, A PERSON WITH DIABETES, A PERSON WITH POOR BLOOD CIRCULATION OR INSENSITIVITY TO HEAT, A PERSON INCAPACITATED BY MEDICATION.
5. THIS APPLIANCE IS NOT TO BE USED ON OR BY CHILDREN. CLOSE SUPERVISION IS NECESSARY WHEN ANY APPLIANCE IS USED NEAR CHILDREN. CHILDREN SHOULD NOT PLAY WITH THE APPLIANCE.
6. DO NOT USE ON AREAS OF INSENSITIVE SKIN.
7. BURNS CAN OCCUR REGARDLESS OF CONTROL SETTING. CHECK SKIN UNDER PAD FREQUENTLY.
8. DO NOT USE IN AN OXYGEN ATMOSPHERE.
9. DO NOT USE PINS OR OTHER METALLIC MEANS TO FASTEN THIS PAD IN PLACE.
10. DO NOT WRAP PAD TOO TIGHT AROUND THE BODY. PAD SHOULD BE SNUG, BUT SHOULD NOT CUT OFF CIRCULATION.
11. DO NOT WRAP PAD AROUND OR NEAR THE NECK TO AVOID PERSONAL INJURY.
12. DO NOT SIT ON, AGAINST OR CRUSH PAD – AVOID SHARP FOLDS. PLACE PAD ON TOP OF AND NOT UNDER THE PART OF BODY NEEDING HEAT.
13. UNPLUG WHEN NOT IN USE. NEVER LEAVE APPLIANCE UNATTENDED, ESPECIALLY IF CHILDREN ARE PRESENT.
14. NEVER PULL THIS PAD BY THE SUPPLY CORD. DO NOT USE THE CORD AS A HANDLE. DO NOT PINCH CORD.
15. DO NOT TUCK IN, TRAP, FOLD, CROSS, PINCH OR WRAP POWER BUTTON, POWER SOURCE, OR CORD WITHIN HEATING PAD DURING USE.
16. USE CAUTION WITH STRAP END TO PREVENT FASTENING TAB FROM DAMAGING CLOTHING OR OTHER PROPERTY.
17. DO NOT PLACE ANYTHING OVER THE HEATING PAD WHILE IN USE OR PLUGGED IN, SUCH AS A TOWEL, BLANKET, CLOTHING, OR ANY OTHER INSULATING MATERIAL, AND NEVER ALLOW HEATING PAD TO WRAP AROUND ITSELF.
18. CAREFULLY EXAMINE PAD, CORD, POWER BUTTON, AND POWER SOURCE BEFORE EACH USE. DISCARD THE PAD IF ANY SIGN OF DETERIORATION, WEAR OR DAMAGE. DO NOT TAMPER WITH THIS PAD IN ANY WAY. THERE ARE NO USER SERVICEABLE PARTS. IF PAD DOES NOT FUNCTION SATISFACTORILY, SEE WARRANTY FOR CUSTOMER CONTACT INFORMATION.
NOTE:
 - 1) FOR OPTIMAL HEATING PAD PERFORMANCE, USE A USB POWER SOURCE THAT HAS 2A CURRENT OUTPUT.
 - 2) A POWER BANK BELOW 2A MAY NOT SUPPORT THIS PRODUCT, AND THE PAD MAY SHUT DOWN.**CAUTION: USE ONLY WITH LISTED/CERTIFIED INFORMATION TECHNOLOGY (COMPUTER) EQUIPMENT/ CERTIFIED ITE POWER SUPPLY/CLASS 2 POWER UNIT.**
19. LOOP CORD LOOSELY WHEN STORING, TIGHT WRAPPING MAY DAMAGE CORD AND INTERNAL PARTS. ALLOW TO COOL BEFORE STORING, AND DO NOT CREASE PAD BY PLACING ITEMS ON TOP OF IT. STORE IN THE ORIGINAL PACKAGING, IN COOL, DARK, DRY PLACE.
20. WHEN NOT IN USE, DISCONNECT HEATING PAD FROM THE USB POWER SOURCE BEFORE MAKING ANY ADJUSTMENTS, CHANGING ACCESSORIES, OR STORING.

- SUCH PREVENTATIVE SAFETY MEASURES REDUCE THE RISK OF STARTING THE APPLIANCE ACCIDENTALLY.
21. DO NOT USE THIS PAD WITH LINIMENT, SALVE OR OINTMENT PREPARATIONS. SKIN BURNS COULD RESULT.
 22. THIS APPLIANCE IS NOT INTENDED FOR MEDICAL USE IN HOSPITALS.
 23. SAVE THESE INSTRUCTIONS.

HOUSEHOLD USE ONLY

HEATING PAD COMPONENTS

Figure 1
Models: 2100 & 2101



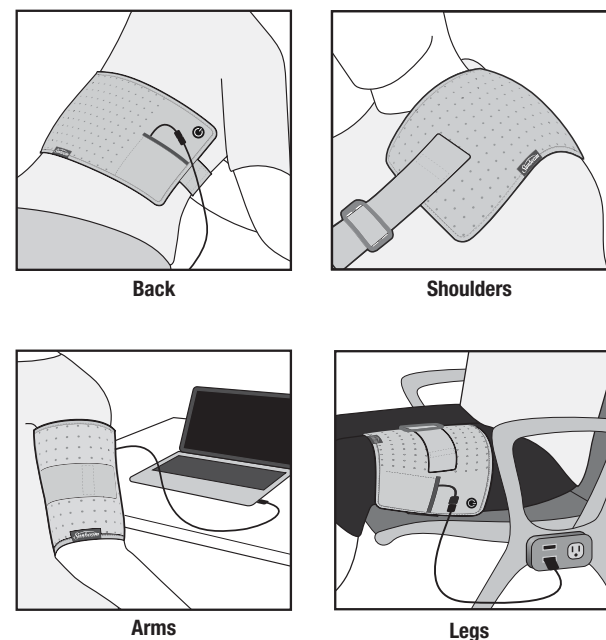
1. Body Side (Lighter Colored Fabric)
2. Exterior Side (Darker Colored Fabric)
3. Fastening Tab
4. Strap Adjuster
5. Integrated Pocket for USB Power Source (power source not included for Model 2100)
6. USB Cord and Connector (Type A Connector)
7. USB Extender (Type A Connector)

For Model 2101 only:
8. USB Wall Adapter
9. Storage Bag

WHERE TO USE YOUR HEATING PAD

Heat increases blood flow to accelerate tissue healing. The GoHeat™ USB Powered Heating Pad provides high-level heat and is compact for on-the-go use, such as in the office, in the car, or anywhere with a USB port. Three heat settings allow for customizable treatment, and the adjustable strap easily secures the pad around areas you need relief the most, like the back, shoulders, arms, and legs.

Figure 2



HOW TO USE:

Connect to USB Power Source

1. Connect the USB Cord (Figure 1, Number 6) directly to a USB power source. For use cases requiring a longer cord, attach the USB Extender (Figure 1, Number 7). Then attach the USB Extender to the USB port on power source. The Power Button/Heat Setting Indicator (Figure 3) will flash 3 times once power to the pad is established.
Note: Power source could be a USB port on a computer, power bank, or wall adapter with a 2A output. Model 2101 comes with a USB Wall Adapter (Figure 1, Number 8); other power sources not included.
2. If a wall adapter is used, connect USB Cord or USB Extender to the USB port on the wall adapter. Plug wall adapter into a 120V AC electrical outlet.
Note: Only use pad with the USB Cord and Extender that came in the box.

Select Heat Setting

1. Use the Power Button (Figure 3) to select a heat setting by pressing the button consecutively until the desired heat setting is reached.
2. The color of the LED light within the Power Button will indicate if the unit is set to low, medium, or high. (See Table 1 for heat setting light meanings.) Recommended treatment time is 20-30 minutes up to three times a day.

Figure 3

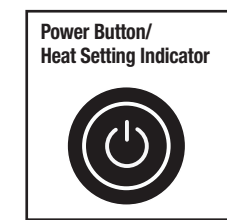


Table 1

Off	No Color
Low	Green
Med	Orange
High	Red

NOTE:
1) FOR OPTIMAL HEATING PAD PERFORMANCE, USE A USB POWER SOURCE THAT HAS 2A CURRENT OUTPUT.
2) A POWER BANK BELOW 2A MAY NOT SUPPORT THIS PRODUCT, AND THE PAD MAY SHUT DOWN.

Apply Heating Pad

1. Ensure the heating pad is connected to the power source by securely attaching the USB Cord to the USB port on the power source before using.
2. If using a power bank as a power source, place the unit into the Integrated Pocket (Figure 1, Number 5) for convenient use.
3. For use cases where longer cord is needed, connect USB Extender to USB Cord prior to connecting to power source.
4. Place the Body Side of the pad (Figure 1, Number 1) flat against the body.
5. Take the edge of the adjustable strap, wrap it around the area of the body needing heat, and fasten directly to the Exterior Side (Figure 1, Number 2) using the Fastening Tab (Figure 1, Number 3) on the end of the strap. The Fastening Tab can attach to any part of the Exterior Side fabric. (See Figure 2 for the best way to wrap each body part.)
Caution: Be careful not to overlap the heated area of the pad.
6. Once in place, tighten around the body by sliding the Strap Adjuster (Figure 1, Number 4) for a comfortable and snug fit. Strap is removable if not needed.
7. To remove pad, detach the Fastening Tab by lifting the end of the strap. Unwrap pad from body.

Auto-Off Feature

The Auto-Off feature is designed for convenience and to conserve energy by automatically turning off after 2 hours of continuous use. Restart the unit by pressing the Power Button and selecting desired heat setting.

After Use

1. Disconnect USB Cord or USB Extender from power source by unplugging from USB port.
Note: If USB Extender was used, disconnect it from the USB Cord. Do not pull them by their cords.
 2. Neatly place the USB Extender into the Integrated Pocket with the USB Cord. With the Body Side facing up, roll the pad from its short edge without the strap towards its short edge with the strap. Then, secure the pad by wrapping the strap around it and placing the Fastening Tab against the Exterior Side of the pad for neat storage.
Note: For Model 2101, place the Wall Adapter on the Body Side of the pad prior to rolling and securing with the strap. Place the neatly rolled pad into the included Storage Bag (Figure 1, Number 9).
 3. Store all contents in cool, dry location between use.
- CAUTION:**
- DO NOT SIT ON, LEAN AGAINST, CRUSH OR FOLD PAD DURING USE.
 - DO NOT OVERLAP THE PAD.
 - DO NOT USE WHILE SLEEPING.
 - SEE ADDITIONAL WARNINGS IN THE IMPORTANT SAFETY INSTRUCTIONS SECTION.

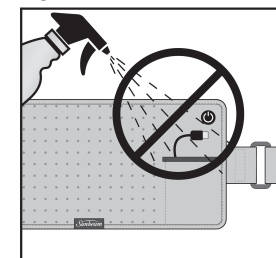
HOW TO USE YOUR HEATING PAD WITH MOIST HEAT THERAPY

You may find that moist heat therapy provides deep, penetrating pain relief. When using moist heat therapy, you should protect furniture and clothing from becoming damp.

1. Dampen the Body Side of the heating pad (Figure 1, Number 1) with water by patting the surface with a wet sponge or cloth, or use a spray bottle to apply a fine mist. Do not thoroughly soak pad.
Note: Ensure pad is disconnected from power source prior to dampening for moist heat therapy.
2. Do not spray or dampen USB Cord, USB Extender, Power Button, USB Wall Adapter, or other power sources.

Caution: Failure to comply may result in product failure and/or personal injury.

Figure 4



WASHING INSTRUCTIONS

DO NOT DRY CLEAN! DO NOT USE BLEACH! DO NOT USE WRINGER! DO NOT IRON!

1. Disconnect USB Cord from power source and/or USB Extender. DO NOT PULL BY THE CORD. DO NOT WASH USB EXTENDER OR USB WALL ADAPTER (included with Model 2101).
Note: Remove any power source that may have been placed in the Integrated Pocket during use. Set it aside, and DO NOT WASH it.
2. Tuck USB Cord into Integrated Pocket to protect it during the wash cycle.
3. Machine wash pad in cold water on gentle cycle, or hand wash. Tumble dry on low heat, and remove promptly from dryer, or drape to air dry.
4. Ensure pad and USB Cord are completely dry prior to use.

For more information on service or product questions, please visit www.sunbeam.com or contact customer service at 1-800-435-1250.

TROUBLESHOOTING:

Problem	Solutions
• No Heat • No Power	• Verify tight connection between pad and USB outlet. • Verify no physical damage to the cord, power button, or pad.
• Pad not hot enough	• Ensure the USB power source can provide a 2A current output. • Ensure that the body side of the pad is laying against the body. • Use the product on HIGH setting for maximum heat.
• Heating pad does not come On	• Ensure USB power source works correctly. In cases where a power bank is used, verify that it is charged. • If using with a power bank, verify that it can provide a 2A current output. A power bank below 2A may not support this product, and the pad may not come on. • If failure continues, discontinue use of the product, and see warranty information to contact Sunbeam Customer Service.
• Pad has a Hot Spot	• Ensure the pad is not folded, bunched, or crushed in any area.
• Pad was On but now LED is off, and the pad has no heat	• Auto-Off feature is set to turn the unit off after 2 hours of continuous use. • To re-start unit, press the Power Button until desired heat setting is reached.

1 YEAR LIMITED WARRANTY

Sunbeam Products, Inc. ("Sunbeam") warrants that for a period of one (1) year from the date of initial retail purchase, this product will be free from defects in material and workmanship, when used in accordance with the instructions provided.

Sunbeam, at its option, will repair or replace this product or any component of the product found to be defective during the warranty period.

Replacement will be made with a new or remanufactured product or component. If the product is no longer available, replacement may be made with a similar product of equal or greater value. This is your exclusive warranty. Do NOT attempt to repair or adjust any electrical or mechanical functions on this product. Doing so will void this warranty.

This warranty is valid for the original retail purchaser from the date of initial retail purchase and is not transferable. Keep the original sales receipt. Proof of purchase is required to obtain warranty performance. Sunbeam dealers, service centers, or retail stores selling Sunbeam products do not have the right to alter, modify or any way change the terms and conditions of this warranty.

This warranty does not cover normal wear of parts or damage resulting from any of the following: negligent use or misuse of the product, use of improper voltage or current, use contrary to the operating instructions, disassembly, repair or alteration by anyone other than Sunbeam or an authorized Sunbeam service center. Further, the warranty does not cover: Acts of God, such as fire, flood, hurricanes and tornadoes.

What are the limits on Sunbeam's Liability?

Sunbeam shall not be liable for any incidental or consequential damages caused by the breach of any express, implied or statutory warranty or condition. Except to the extent prohibited by applicable law, any implied warranty or condition of merchantability or fitness for a particular purpose is limited in duration to the duration of the above warranty. Sunbeam disclaims all other warranties, conditions or representations, express, implied, statutory or otherwise. Sunbeam shall not be liable for any damages of any kind resulting from the purchase, use or misuse of, or inability to use the product including incidental, special, consequential or similar damages or loss of profits, or for any breach of contract, fundamental or otherwise, or for any claim brought against purchaser by any other party. Some provinces, states or jurisdictions do not allow the exclusion or limitation of incidental or consequential damages or limitations on how long an implied warranty lasts, so the above limitations or exclusion may not apply to you. This warranty gives you specific legal rights, and you may also have other rights that vary from province to province, state to state or jurisdiction to jurisdiction.

How to Obtain Warranty Service

If you have any question regarding this warranty or would like to obtain warranty service, please call 1-800-435-1250 and a convenient service center address will be provided to you. This warranty is offered by Sunbeam Products, Inc., located at 2381 NW Executive Center Drive, Boca Raton, FL 33431.

PLEASE DO NOT RETURN THIS PRODUCT TO THE ADDRESS ABOVE OR TO THE PLACE OF PURCHASE.

FCC COMPLIANT

The device complies with part 15 of the FCC rules. Operation is subject to the following two conditions: (1) This device may not cause harmful interference, and (2) this device must accept any interference received, including interference that may cause undesired operation.

Note: This product has been tested and found to comply with the limits for a Class B digital device, pursuant to part 15 of the FCC Rules. These limits are designed to provide reasonable protection against harmful interference in a residential installation. This product generates, uses and can radiate radio frequency energy and, if not installed and used in accordance with the instructions, may cause harmful interference to radio communications. However, there is no guarantee that interference will not occur in a particular installation. If this product does cause harmful interference to radio or television reception, which can be determined by turning the product off and on, the user is encouraged to try to correct the interference by one or more of the following measures: Reorient or relocate the receiving antenna. Increase the separation between the product and receiver. Connect the product into an outlet on a circuit different from that to which the receiver is connected. Consult the dealer or an experienced radio/TV technician for help.

Changes or modifications not expressly approved by the party responsible for compliance could void the user's authority to operate the equipment.

©2021 Sunbeam Products, Inc. All rights reserved.

Printed in China. 2100-911_2101-611_20ESM1

GCDS-SUN129232-LD

P.N. ART000069680

www.sunbeam.com

