

USE AND CARE INSTRUCTIONS

⚠ WARNING: Not for use with carbonated beverages.
Do not freeze or microwave. Store with lid, puck and straw removed.

⚠ CAUTION:

- Not intended for children under 3 years of age.
- Product is NOT designed for hot liquids. Use only with cold liquids.
DO NOT use with carbonated or pulpy beverages.
- Prior to drinking, make sure the spill-proof lid is properly threaded to the body and screwed completely.
- DO NOT overfill. Fill liquid just below the threading on bottle.
- DO NOT use cleaners containing bleach, chlorine, abrasives, and/or harsh chemicals.
- DO NOT continue to use if product is damaged.

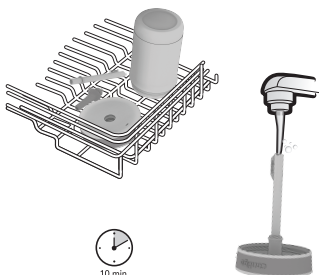
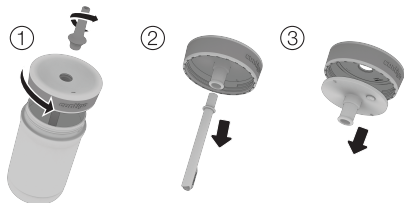
HOW TO USE

Sip from spill-proof lid.

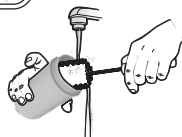
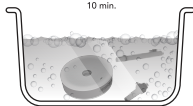


HOW TO CLEAN

1. Remove top straw. Twist counterclockwise to detach.
2. Remove bottom straw. Pull to detach.
3. Remove silicone puck. Pull to detach.



- Top rack dishwasher safe.
- RINSE LID IMMEDIATELY AFTER EACH USE with warm water, so water flows through the drink straw.
- If washing by hand, soak lid and straw for 10 minutes in hot, soapy water. Hand wash body with warm water and a mild detergent.
- Rinse both lid and body thoroughly before use.



*Limited Lifetime Guarantee only applicable in the US & Canada. Visit GoContigo.com for details.